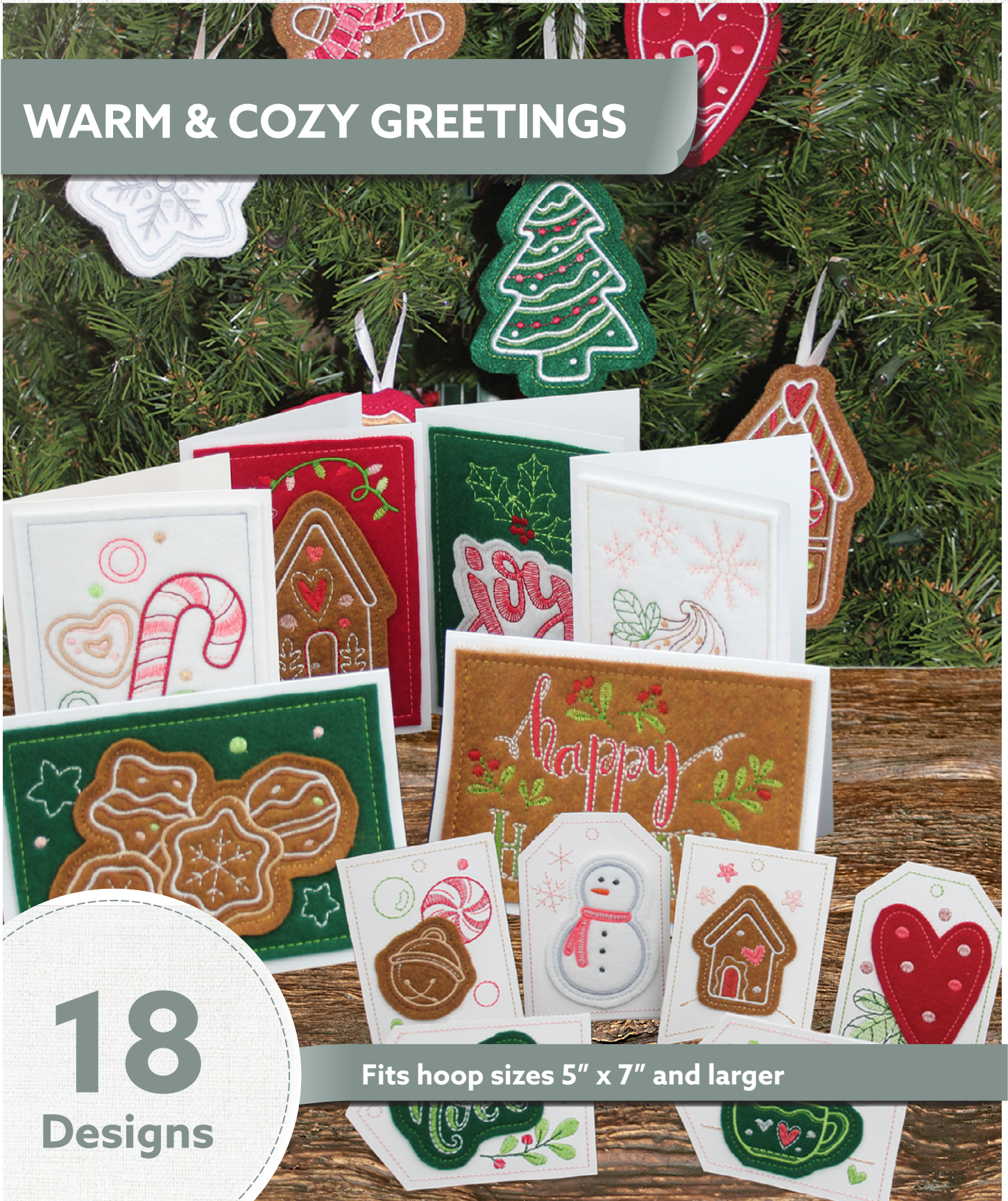


WARM & COZY GREETINGS



18
Designs

Fits hoop sizes 5" x 7" and larger

THREAD LIST



Isacord Thread Colors

0015 White
0145 Skylight
0832 Sisal
0933 Redwood
1140 Meringue
1141 Tan
1301 Paprika
1753 Strawberries N' Cream
1860 Shell
1900 Geranium
1906 Tulip
1911 Foliage Rose
2051 Teaberry
3572 Summer Grey
4174 Charcoal
5643 Green Dust
5722 Green Grass
5730 Apple Green
5740 Mint

***Project instructions included after design list**

Note: Some designs in this collection may have been created using unique special stitches and/or techniques. To preserve design integrity when rescaling or rotating designs in your software, always rescale or rotate designs using the handles directly on-screen.

***Felt Required**



12881-01 Cozy Cup Applique Card

Size Inches:	Size mm:	Stitch Count:
6.25 X 4.62 in.	158.8 X 117.5 mm	6174 St.
7.00 X 5.00 in.	177.8 X 127.0 mm	6866 St.

<input type="checkbox"/>	1. Card Placement Guide	0015
<input type="checkbox"/>	2. White Felt Placement Stitch.....	0015
<input type="checkbox"/>	3. White Felt Tackdown.....	1140
<input type="checkbox"/>	4. Light Pink Detail	1860
<input type="checkbox"/>	5. Brown Detail	0933
<input type="checkbox"/>	6. Green Detail.....	5722
<input type="checkbox"/>	7. Light Brown Detail.....	0832
<input type="checkbox"/>	8. Red Felt Placement Stitch	0015
<input type="checkbox"/>	9. Light Red Tackdown and Detail	1753
<input type="checkbox"/>	10. White Detail	0015

***Felt Required**



12881-02 Joy Applique Card

Size Inches:	Size mm:	Stitch Count:
6.25 X 4.62 in.	158.8 X 117.5 mm	4857 St.
7.00 X 5.00 in.	177.8 X 127.0 mm	6605 St.

<input type="checkbox"/>	1. Card Placement Guide	0015
<input type="checkbox"/>	2. Green Felt Placement Stitch.....	0015
<input type="checkbox"/>	3. Green Felt Tackdown.....	5740
<input type="checkbox"/>	4. Light Green Detail.....	5730
<input type="checkbox"/>	5. White Felt Placement Stitch.....	5643
<input type="checkbox"/>	6. White Felt Tackdown.....	1860
<input type="checkbox"/>	7. Red Detail	1900
<input type="checkbox"/>	8. Dark Red Detail	1911

Note: Some designs in this collection may have been created using unique special stitches and/or techniques. To preserve design integrity when rescaling or rotating designs in your software, always rescale or rotate designs using the handles directly on-screen.

***Felt Required**



12881-03 House Applique Card

Size Inches:	Size mm:	Stitch Count:
6.25 X 4.62 in.	158.8 X 117.5 mm	7187 St.
7.00 X 5.00 in.	177.8 X 127.0 mm	8214 St.

<input type="checkbox"/>	1. Card Placement Guide	0015
<input type="checkbox"/>	2. Red Felt Placement Stitch	0015
<input type="checkbox"/>	3. Red Felt Tackdown	1753
<input type="checkbox"/>	4. Light Green Detail	5730
<input type="checkbox"/>	5. Red Detail	1900
<input type="checkbox"/>	6. Mint Detail	5740
<input type="checkbox"/>	7. Light Pink Detail	1860
<input type="checkbox"/>	8. Green Detail	5722
<input type="checkbox"/>	9. Brown Felt Placement Stitch	1911
<input type="checkbox"/>	10. Light Brown Tackdown	0832
<input type="checkbox"/>	11. Brown Detail	0933
<input type="checkbox"/>	12. White Detail	0015
<input type="checkbox"/>	13. Red Detail	1900
<input type="checkbox"/>	14. Light Pink Detail	1860
<input type="checkbox"/>	15. Light Red Detail	1753

***Felt Required**



12881-04 Cookies Applique Card

Size Inches:	Size mm:	Stitch Count:
6.25 X 4.62 in.	158.8 X 117.5 mm	7988 St.
7.00 X 5.00 in.	177.8 X 127.0 mm	9520 St.

<input type="checkbox"/>	1. Card Placement Guide	0015
<input type="checkbox"/>	2. Green Felt Placement Stitch	0015
<input type="checkbox"/>	3. Green Felt Tackdown	5730
<input type="checkbox"/>	4. White Detail	0015
<input type="checkbox"/>	5. Brown Felt Placement Stitch	5643
<input type="checkbox"/>	6. Brown Felt Tackdown	0832
<input type="checkbox"/>	7. Brown Detail	0933
<input type="checkbox"/>	8. White Detail	0015
<input type="checkbox"/>	9. Light Tan Detail	1140
<input type="checkbox"/>	10. Tan Detail	1141
<input type="checkbox"/>	11. Light Pink Detail	1860
<input type="checkbox"/>	12. Mint Detail	5740

Note: Some designs in this collection may have been created using unique special stitches and/or techniques. To preserve design integrity when rescaling or rotating designs in your software, always rescale or rotate designs using the handles directly on-screen.

***Felt Required**



12881-05 Candies Applique Card

Size Inches:	Size mm:	Stitch Count:
6.25 X 4.62 in.	158.8 X 117.5 mm	7194 St.
7.00 X 5.00 in.	177.8 X 127.0 mm	8488 St.

	1. Card Placement Guide	0015
	2. White Felt Placement Stitch.....	0015
	3. White Felt Tackdown	3572
	4. Light Pink Detail	1860
	5. Light Red Detail	1753
	6. Tan Detail.....	1141
	7. Dark Red Detail	1911
	8. Light Green Detail	5730
	9. Mint Detail.....	5740
	10. Light Tan Detail	1140
	11. Green Detail.....	5722

***Felt Required**



12881-06 Happy Holidays Applique Card

Size Inches:	Size mm:	Stitch Count:
6.25 X 4.62 in.	158.8 X 117.5 mm	7879 St.
7.00 X 5.00 in.	177.8 X 127.0 mm	8942 St.

	1. Card Placement Guide	0015
	2. Brown Felt Placement Stitch.....	0015
	3. Brown Felt Tackdown.....	0832
	4. Red Letters	1900
	5. Green Letters	5722
	6. White Detail	0015
	7. Light Green Detail	5730
	8. Green Detail.....	5722
	9. Dark Red Detail	1911

Note: Some designs in this collection may have been created using unique special stitches and/or techniques. To preserve design integrity when rescaling or rotating designs in your software, always rescale or rotate designs using the handles directly on-screen.

***Felt Required**



12881-07 Gingerbread Man Ornament FSA

Size Inches: Size mm: Stitch Count:
4.82 X 3.87 in. 122.4 X 98.4 mm 9064 St.

<input type="checkbox"/>	1. Front Brown Felt Placement Stitch	0015
<input type="checkbox"/>	2. Front Brown Felt Tackdown	0015
<input type="checkbox"/>	3. Brown Detail	0933
<input type="checkbox"/>	4. White Icing	0015
<input type="checkbox"/>	5. Light Red Detail	1753
<input type="checkbox"/>	6. Medium Red Detail	1906
<input type="checkbox"/>	7. White Scarf Detail	0015
<input type="checkbox"/>	8. Light Pink Detail	1860
<input type="checkbox"/>	9. Back Brown Felt Tackdown	1141

***Felt Required**



12881-08 Christmas Tree Ornament FSA

Size Inches: Size mm: Stitch Count:
4.71 X 3.60 in. 119.7 X 91.5 mm 6766 St.

<input type="checkbox"/>	1. Front Green Felt Placement Stitch	0015
<input type="checkbox"/>	2. Front Green Felt Tackdown	0015
<input type="checkbox"/>	3. Light Green Detail	5730
<input type="checkbox"/>	4. Red Detail	1900
<input type="checkbox"/>	5. Light Red Detail	1753
<input type="checkbox"/>	6. White Detail	0015
<input type="checkbox"/>	7. Back Green Felt Tackdown	5730

Note: Some designs in this collection may have been created using unique special stitches and/or techniques. To preserve design integrity when rescaling or rotating designs in your software, always rescale or rotate designs using the handles directly on-screen.

***Felt Required**



12881-09 Heart Ornament FSA

Size Inches:	Size mm:	Stitch Count:
4.15 X 3.28 in.	105.3 X 83.4 mm	4444 St.

- 1. Front Red Felt Placement Stitch0015
- 2. Front Red Felt Tackdown0015
- 3. Light Red Detail 1753
- 4. White Detail0015
- 5. Light Pink Detail1860
- 6. Back Red Felt Tackdown 1753

***Felt Required**



12881-10 Snowflake Ornament FSA

Size Inches:	Size mm:	Stitch Count:
3.91 X 3.80 in.	99.3 X 96.5 mm	4541 St.

- 1. Front White Felt Placement Stitch0015
- 2. Front White Felt Tackdown0015
- 3. Gray Detail3572
- 4. Light Gray Detail0145
- 5. Back White Felt Tackdown3572

Note: Some designs in this collection may have been created using unique special stitches and/or techniques. To preserve design integrity when rescaling or rotating designs in your software, always rescale or rotate designs using the handles directly on-screen.

***Felt Required**



12881-11 House Ornament FSA

Size Inches: Size mm: Stitch Count:
5.45 X 3.74 in. 138.4 X 94.9 mm 12851 St.

- 1. Front Brown Felt Placement Stitch0015
- 2. Front Brown Felt Tackdown0015
- 3. Brown Detail0933
- 4. Light Green Detail5730
- 5. Red Detail1900
- 6. Dark Red Detail1911
- 7. White Detail0015
- 8. Back Brown Felt Tackdown0832

***Felt Required**



12881-12 Cozy Cup Ornament FSA

Size Inches: Size mm: Stitch Count:
4.02 X 4.20 in. 102.2 X 106.6 mm 6636 St.

- 1. Front Red Felt Placement Stitch0015
- 2. Front Red Felt Tackdown0015
- 3. Light Brown Detail0832
- 4. Light Red Detail1753
- 5. Light Pink Detail1860
- 6. White Detail0015
- 7. Back Red Felt Tackdown1900

Note: Some designs in this collection may have been created using unique special stitches and/or techniques. To preserve design integrity when rescaling or rotating designs in your software, always rescale or rotate designs using the handles directly on-screen.

***Felt Required**

12881-13 Heart Applique Gift Tag

Size Inches: Size mm: Stitch Count:
5.00 X 3.52 in. **127.1 X 89.3 mm** **2962 St.**



<input type="checkbox"/>	1. Front Tag Placement Guide	0015
<input type="checkbox"/>	2. Front Tag Tackdown.....	0015
<input type="checkbox"/>	3. Light Green Leaves	5730
<input type="checkbox"/>	4. Dark Green Outlines	5643
<input type="checkbox"/>	5. Red Felt Placement Stitch	0015
<input type="checkbox"/>	6. Red Felt Tackdown and Detail	1753
<input type="checkbox"/>	7. Light Pink Detail.....	1860
<input type="checkbox"/>	8. Pink Detail.....	2051
<input type="checkbox"/>	9. Back Tag Tackdown and Hole Punch.....	5730

***Felt Required**

12881-14 Noel Applique Gift Tag

Size Inches: Size mm: Stitch Count:
5.00 X 3.49 in. **127.1 X 88.7 mm** **4217 St.**



<input type="checkbox"/>	1. Front Tag Placement Guide	0015
<input type="checkbox"/>	2. Front Tag Tackdown.....	0015
<input type="checkbox"/>	3. Light Green Leaves	5730
<input type="checkbox"/>	4. Stems.....	5643
<input type="checkbox"/>	5. Green Felt Placement Stitch.....	0015
<input type="checkbox"/>	6. Green Felt Tackdown.....	5722
<input type="checkbox"/>	7. Light Green Letters	5730
<input type="checkbox"/>	8. White Letter Outlines	0015
<input type="checkbox"/>	9. Berries	1900
<input type="checkbox"/>	10. Back Tag Tackdown and Hole Punch.....	1860

Note: Some designs in this collection may have been created using unique special stitches and/or techniques. To preserve design integrity when rescaling or rotating designs in your software, always rescale or rotate designs using the handles directly on-screen.

***Felt Required**



12881-15 Jingle Bell Applique Gift Tag

Size Inches: Size mm: Stitch Count:
5.00 X 3.50 in. **127.1 X 88.8 mm** **4142 St.**

<input type="checkbox"/>	1. Front Tag Placement Guide	0015
<input type="checkbox"/>	2. Front Tag Tackdown.....	0015
<input type="checkbox"/>	3. Light Red Detail	1753
<input type="checkbox"/>	4. Red Detail	1900
<input type="checkbox"/>	5. Brown Felt Placement Stitch.....	0015
<input type="checkbox"/>	6. Brown Tackdown and Detail	0933
<input type="checkbox"/>	7. White Detail	0015
<input type="checkbox"/>	8. Tan Detail.....	1141
<input type="checkbox"/>	9. Light Green Detail.....	5730
<input type="checkbox"/>	10. Back Tag Tackdown and Hole Punch.....	1140

***Felt Required**



12881-16 Snowman Applique Gift Tag

Size Inches: Size mm: Stitch Count:
5.00 X 3.52 in. **127.1 X 89.3 mm** **4233 St.**

<input type="checkbox"/>	1. Front Tag Placement Guide	0015
<input type="checkbox"/>	2. Front Tag Tackdown.....	0015
<input type="checkbox"/>	3. Light Pink Detail.....	1860
<input type="checkbox"/>	4. White Felt Placement Stitch.....	0015
<input type="checkbox"/>	5. White Felt Tackdown.....	0145
<input type="checkbox"/>	6. Gray Detail.....	3572
<input type="checkbox"/>	7. Red Detail	1900
<input type="checkbox"/>	8. Light Red Detail	1753
<input type="checkbox"/>	9. Nose	1301
<input type="checkbox"/>	10. Charcoal Detail	4174
<input type="checkbox"/>	11. Back Tag Tackdown and Hole Punch.....	1860

Note: Some designs in this collection may have been created using unique special stitches and/or techniques. To preserve design integrity when rescaling or rotating designs in your software, always rescale or rotate designs using the handles directly on-screen.

***Felt Required**



12881-17 Cozy Cup Applique Gift Tag

Size Inches: Size mm: Stitch Count:
5.00 X 3.49 in. **127.1 X 88.7 mm** **3901 St.**

- 1. Front Tag Placement Guide0015
- 2. Front Tag Tackdown.....0015
- 3. Tan Detail..... 1141
- 4. Green Felt Placement Stitch.....0015
- 5. Green Felt Tackdown and Detail.....5722
- 6. Light Green Detail.....5730
- 7. Light Red Detail1753
- 8. White Detail0015
- 9. Back Tag Tackdown and Hole Punch..... 1860

***Felt Required**



12881-18 House Applique Gift Tag

Size Inches: Size mm: Stitch Count:
5.00 X 3.50 in. **127.1 X 88.8 mm** **3982 St.**

- 1. Front Tag Placement Guide0015
- 2. Front Tag Tackdown.....0015
- 3. Light Brown Detail.....0832
- 4. Brown Felt Placement Stitch.....0015
- 5. Brown Felt Tackdown..... 1141
- 6. Brown Detail0933
- 7. Red Detail1900
- 8. White Detail0015
- 9. Light Red Detail1753
- 10. Light Pink Detail.....1860
- 11. Back Tag Tackdown and Hole Punch..... 1140

ORNAMENT INSTRUCTIONS



Stabilizers

- OESD StabilStick TearAway
- OESD Applique Fuse and Fix

Fabrics/Notions

- Green felt (1) 9" x 6"
- Ribbon 9"
- Embroidery Needle Sharp 75/11
- Isacord thread per thread chart

NOTE

- The ornament instructions included in the design pack are general instructions for all the ornament designs. For demonstration purposes, a sample design is used that best demonstrates general technique. Fabric and thread requirements will vary by design, consult the templates at the end of the instructions for specific size requirements.
- The sample design is 12881-08.

STEP 1

- Print the ornament template and the mirrored version of the ornament templates (at 100% scale or 1:1 ratio) onto the paper side of Applique Fuse and Fix.
- Roughly cut out the templates about 1/4" from the outer edge.
- TIP: Mark the paper side of the mirrored template with an "M" to differentiate between the two.



EMBROIDERY



STEP 2

- Fuse each template onto the felt following the package instructions.
- Cut each template on the outer edge of the printed design.



STEP 3

- Hoop 1 layer of Medium Weight TearAway.



STEP 4

- Stitch Machine Step 1, Front Green Felt Placement Stitch.



STEP 5

- Remove the hoop from the machine, but NOT the project from the hoop.
- Score the paper backing of the mirrored template, and remove the paper backing to expose the adhesive surface.
- Position the felt, adhesive side down, within the placement lines.
- Return the hoop to the machine.



EMBROIDERY



STEP 6

- Stitch Machine Step 2, Front Green Felt Tackdown.



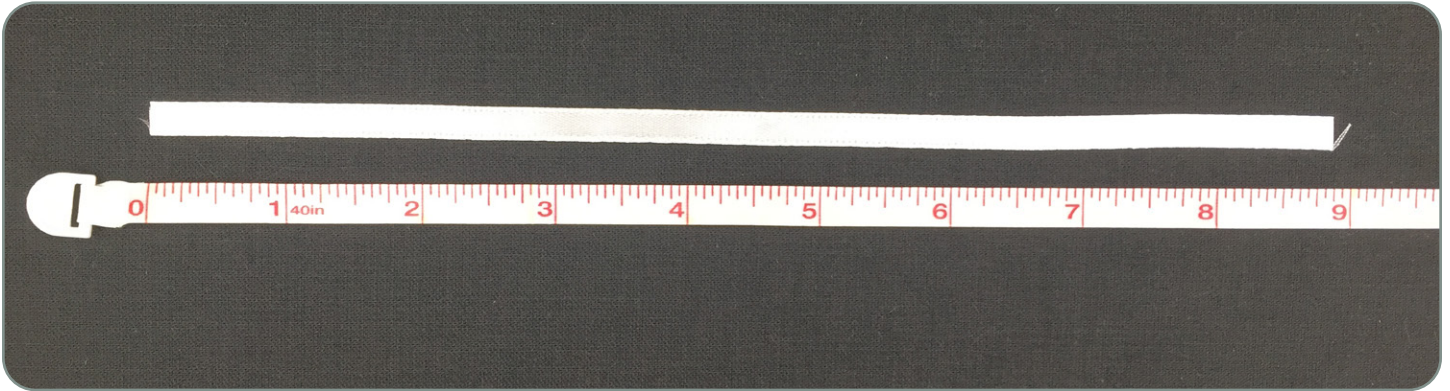
STEP 7

- Stitch Machine Steps 3-6, changing thread colors per thread chart.



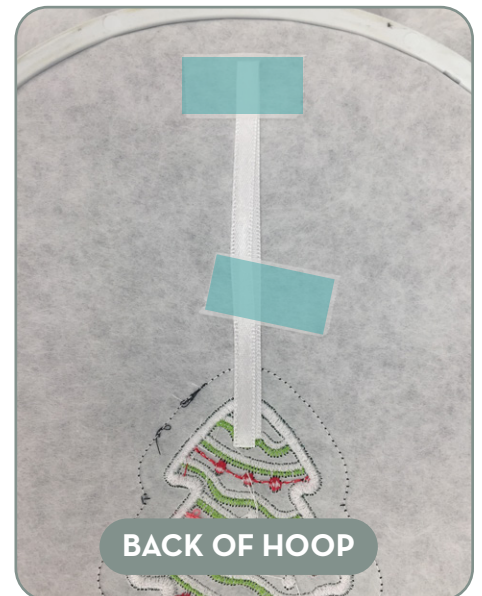
STEP 8

- Cut ribbon 9" long.



STEP 9

- Remove the hoop from the machine, but NOT the project from the hoop.
- Turn the hoop over, right side down on a flat surface.
- Fold the ribbon in half and tape in place with about 1" of the ribbon below the placement stitch of the design as shown.
- Tape in place to secure, but do not press firmly on the project.



STEP 10

- Score and remove the paper from the remaining felt piece to expose the adhesive surface.
- Gently position in place within the original placement line.
- Once properly positioned, turn the hoop over, place on a flat surface and finger press from the front to secure the positioning.
- Tip: To ensure that the ornament back matches the ornament front placement, hold the hoop up to the light.



STEP 11

- Return the hoop to the machine.
- Stitch Machine Step 7, Back Green Felt Tackdown.



STEP 12

- Remove the hoop from the machine and the project from the hoop.
- Tear away the stabilizer.
- The ornament is complete.



GIFT TAG INSTRUCTIONS



Stabilizers

- OESD StabilStick TearAway
- OESD Applique Fuse and Fix

Fabrics/Notions

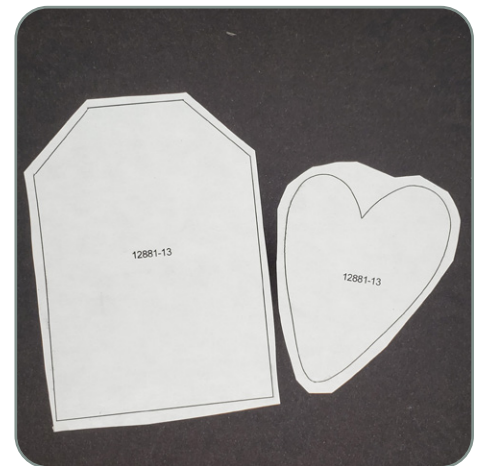
- OESD Perfect Punch Tool
- Red felt (1) 3.5" x 4.5"
- Start Here by OESD Blank Greeting Cards Size A7 (5" x 7")
- Embroidery Needle Sharp 75/11
- Isacord thread per thread chart

NOTE

- The gift tag instructions included in the design pack are general instructions for all the gift tag designs. For demonstration purposes, a sample design is used that best demonstrates general technique. Fabric and thread requirements will vary by design, consult the templates at the end of the instructions for specific size requirements.
- The sample design is 12881-13.
- Note: Some thread colors in instructions have been changed or digitally enhanced for better visibility.

STEP 1

- Print the mirrored version of the templates (at 100% scale or 1:1 ratio) onto the paper side of Applique Fuse and Fix. Roughly cut out the templates about 1/4" from the outer edge.



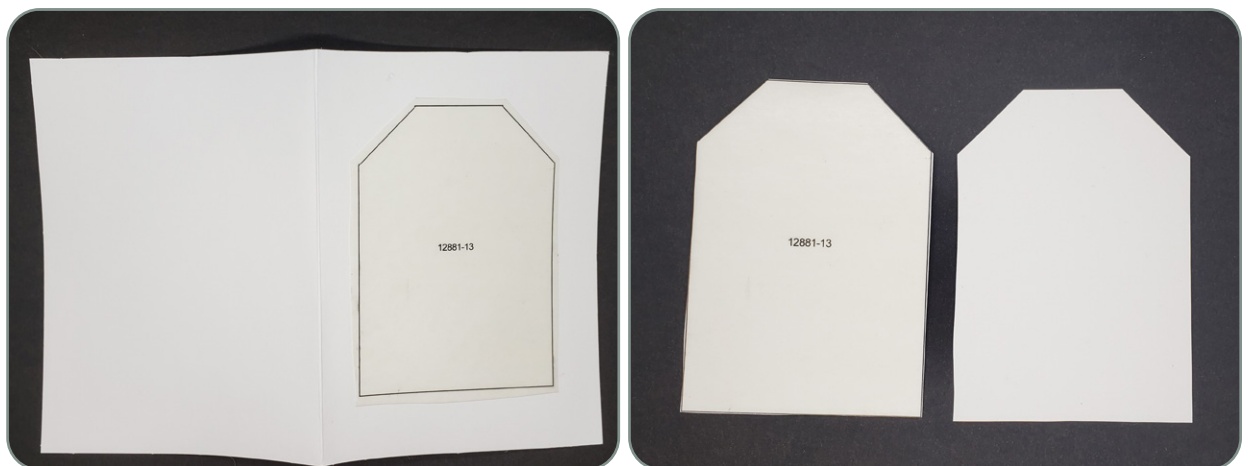
STEP 2

- Fuse the applique design template onto the felt per the package instructions.
- Cut the template on the outer edge of the printed design. Set aside.



STEP 3

- Fuse the tag template onto the back of the card stock per package instructions.
- Fold the card stock in half. Place the template on the folded card stock.
- Cut through both layers on the black line of the printed template to create 2 tag pieces: 1 plain and 1 with Applique Fuse and Fix.



EMBROIDERY



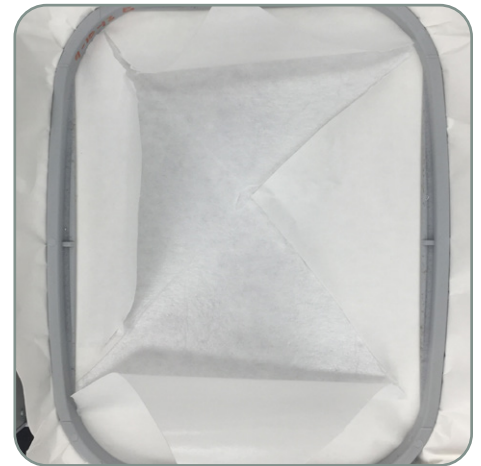
STEP 4

- Hoop 1 layer of StabilStick TearAway paper side up.



STEP 5

- Score the paper only with a pin or seam ripper, and remove the paper covering to reveal the adhesive surface.



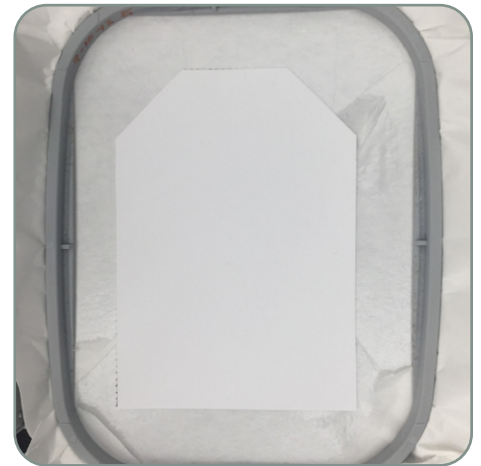
STEP 6

- Stitch Machine Step 1, Front Tag Placement Guide.



STEP 7

- Remove the hoop from the machine, but NOT the project from the hoop.
- Position the plain tag within the placement lines. Finger press to secure.
- Return the hoop to the machine.



STEP 8

- Stitch Machine Step 2, Front Tag Tackdown.



STEP 9

- Stitch Machine Steps 3 and 4, changing thread colors per the thread chart.
- Stitch Machine Step 5, Red Felt Placement Stitch.



STEP 10

- Remove the hoop from the machine, but NOT the project from the hoop.
- Place the hoop on a flat surface.
- Score the paper backing of the red felt heart and remove the paper to reveal the adhesive surface.
- Position the red felt heart on the placement line.
- Finger press to secure.



STEP 11

- Return the hoop to the machine.
- Stitch Machine Steps 6-8 changing thread colors per the thread chart.



EMBROIDERY



STEP 12

- Remove the hoop from the machine, but NOT the project from the hoop.
- Place the hoop right side down on a flat surface.



STEP 13

- Score and remove the paper from the remaining card stock tag to expose the adhesive surface.
- Gently position in place within the original placement line.
- Once properly positioned, turn the hoop over, place on a flat surface and finger press from the front to secure the positioning.
- Tip: To ensure that the gift tag back matches the gift tag front placement, hold the hoop up to the light.



EMBROIDERY



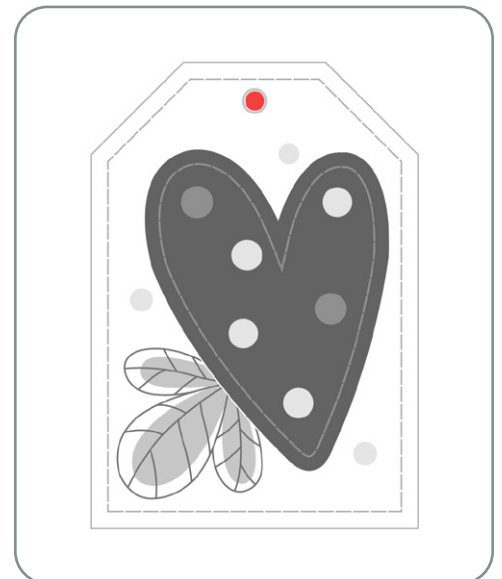
STEP 14

- Return the hoop to the machine.
- Stitch Machine Step 9, Back Tag Tackdown and Hole Punch.



STEP 15

- Remove the project from the hoop.
- Using OESD Punch Tool and the 3mm attachment, punch holes in the eyelet indicated.



STEP 16

- Trim away the excess stabilizer along all the edges of the tag.
- NOTE: Cutting the stabilizer away prevents bending or creasing of the cardstock and prevents pulling out stitches.
- The gift tag is now complete.



CARD INSTRUCTIONS



Stabilizers

- OESD StabilStick TearAway
- OESD Applique Fuse and Fix
- OESD Fuse and Seal

Fabrics/Textiles

- OESD Start Here Greeting Cards, size A7 (5" x 7")
- White felt, 5" x 7"
- Note: Two sizes of cards are included in this collection. Card designs ending in the letter 'S' use the Start Here Greeting Cards, size A6 (4.5" x 6.25"). Card designs ending with 'L' use Start Here Greeting Cards, A7 (5" x 7").

Notions & Tools

- Embroidery Needle Sharp 75/11
- Expert Embroidery Tape TearAway
- Isacord Threads per thread chart

NOTE

- The greeting card instructions included in the design pack are general instructions for all the greeting card designs. For demonstration purposes, a sample design is used that best demonstrates the general technique. Fabric and thread requirements will vary by design, consult the templates at the end of the instructions for specific size requirements.
- The sample design is 12881-05L.
- Note: Some thread colors in instructions have been changed or digitally enhanced for better visibility.

STEP 1

- Print the mirrored version of the templates (at 100% scale or 1:1 ratio) onto the paper side of Applique Fuse and Fix.
- Roughly cut out the template about a ¼" from the outer edge.
- Fuse the applique design template onto the felt following the package instructions.
- Trim Template on the outer edge of the printed black line.



EMBROIDERY



STEP 2

- Hoop a piece of StabilStick TearAway paper side up.



STEP 3

- Score the paper with scissors, pin, or seam ripper.
- Remove the paper to expose the adhesive surface.

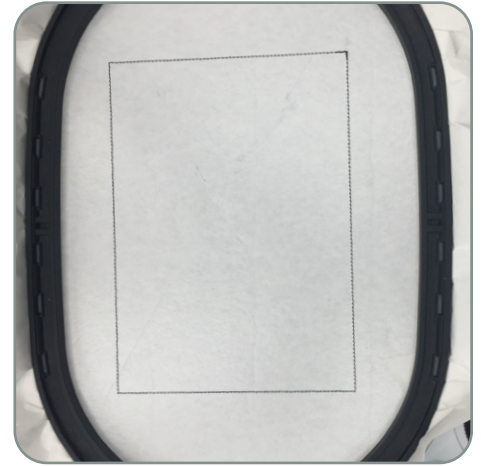


EMBROIDERY



STEP 4

- Place the hoop on the machine.
- Thread the machine per thread chart.
- Stitch Machine Step 1, Card Placement Guide.
- Note: A darker thread color was used in the sample for visibility.



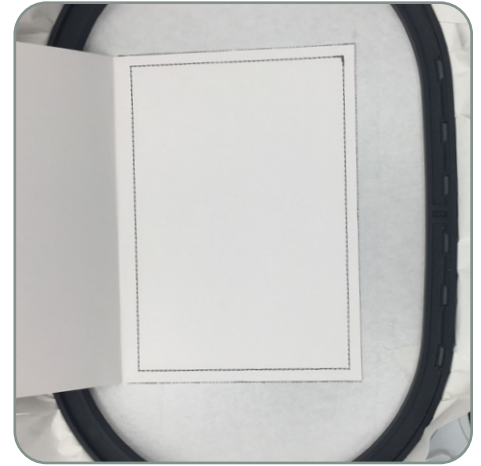
STEP 5

- Remove the hoop from the machine, but NOT the project from the hoop.
- Set the hoop on a flat surface.
- Place the front of the card face up within the placement stitch, lining up all edges.
- Finger press the card to secure to the adhesive surface.



STEP 6

- Return the hoop to the machine.
- Stitch Machine Step 2, White Felt Placement Stitch.
- Note: A darker thread color was used in the sample for visibility.



STEP 7

- Remove the hoop from the machine, but NOT the project from the hoop.
- Score the paper of the template on the back of the white felt.
- Remove the paper to expose the adhesive surface.
- Position the felt, sticky side down, within placement stitch, aligning all edges.



EMBROIDERY



STEP 8

- Return the hoop to the machine.
- Change threads per thread chart.
- Stitch Machine Step 3, White Felt Tackdown.



STEP 9

- Stitch the remainder of the design. Change thread colors as required.



EMBROIDERY



STEP 10

- Remove hoop from machine and the project from the hoop.
- On a flat surface, fold the stabilizer back and trim it away close to the design.
- NOTE: Cutting the stabilizer away prevents bending or creasing of the cardstock.



STEP 11

- Cut another card of the same size in half.
- Cut a piece of Fuse and Seal the same size.
- Iron the Fuse and Seal to the cut card with a medium warm iron.



EMBROIDERY



STEP 12

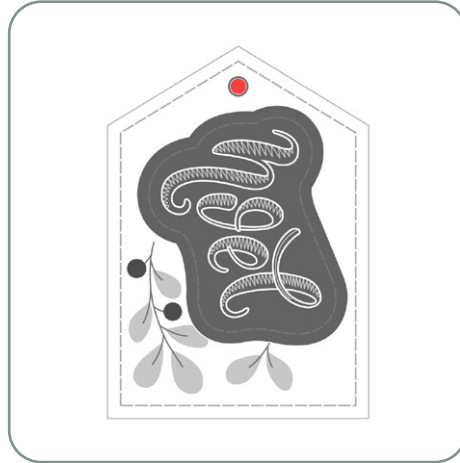
- Remove paper from Fuse and Seal.
- Cover the back of embroider in the inside of card and iron to adhere.
- The card is complete!



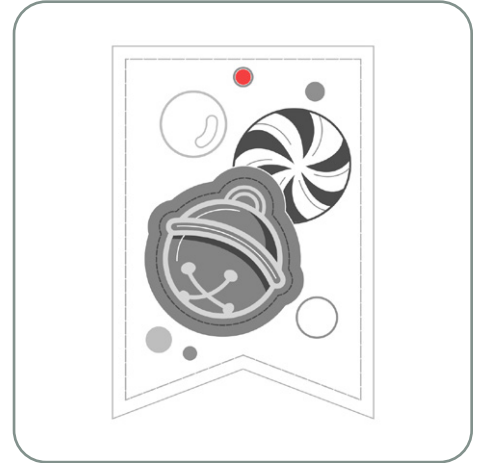
12881-13



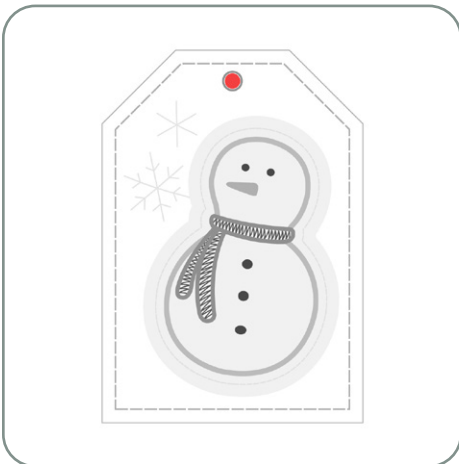
12881-14



12881-15



12881-16



12881-17



12881-18



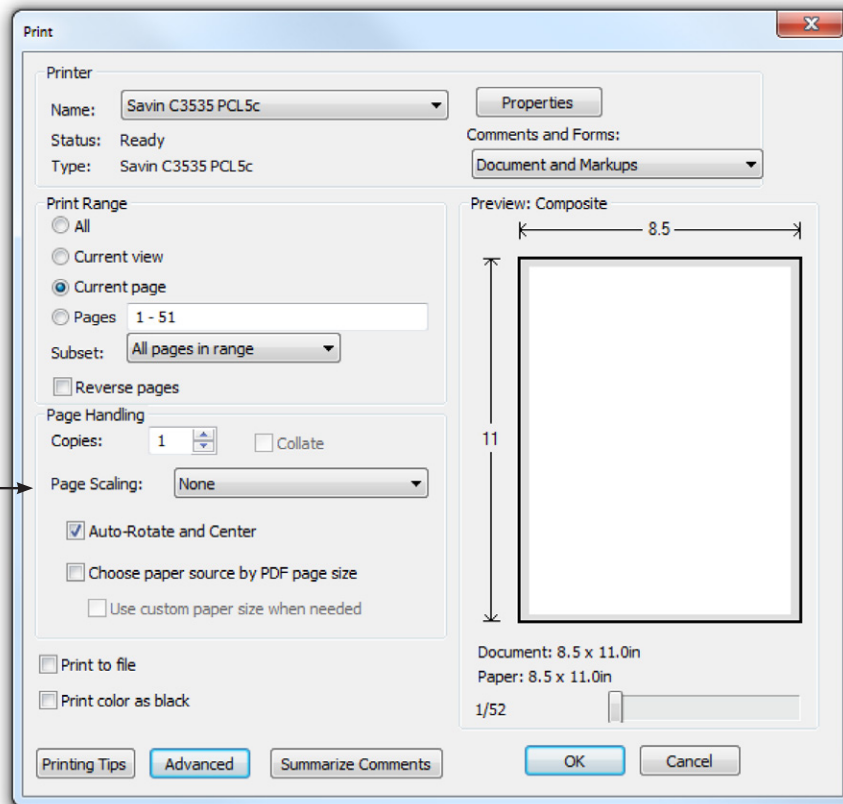
- = 2 MM
- = 3 MM
- = 4 MM

CRAFT KNIFE



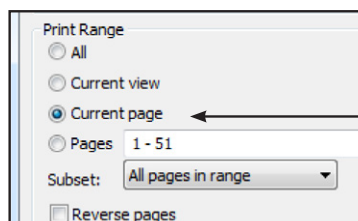
ATTENTION

When printing this document, any page scaling or page fitting options in your print dialog box must be turned OFF or set to NONE so that your files will print out at their actual size. Images not printed at actual size will not function as intended.



TO SAVE PAPER

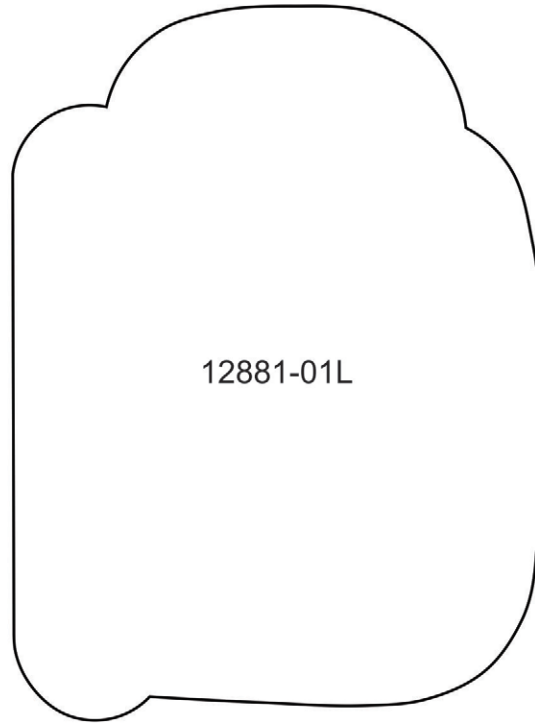
Only print the desired image by navigating to the image's page, go to File > Print and select "Current page" in the print dialog box. Repeat for each desired image.



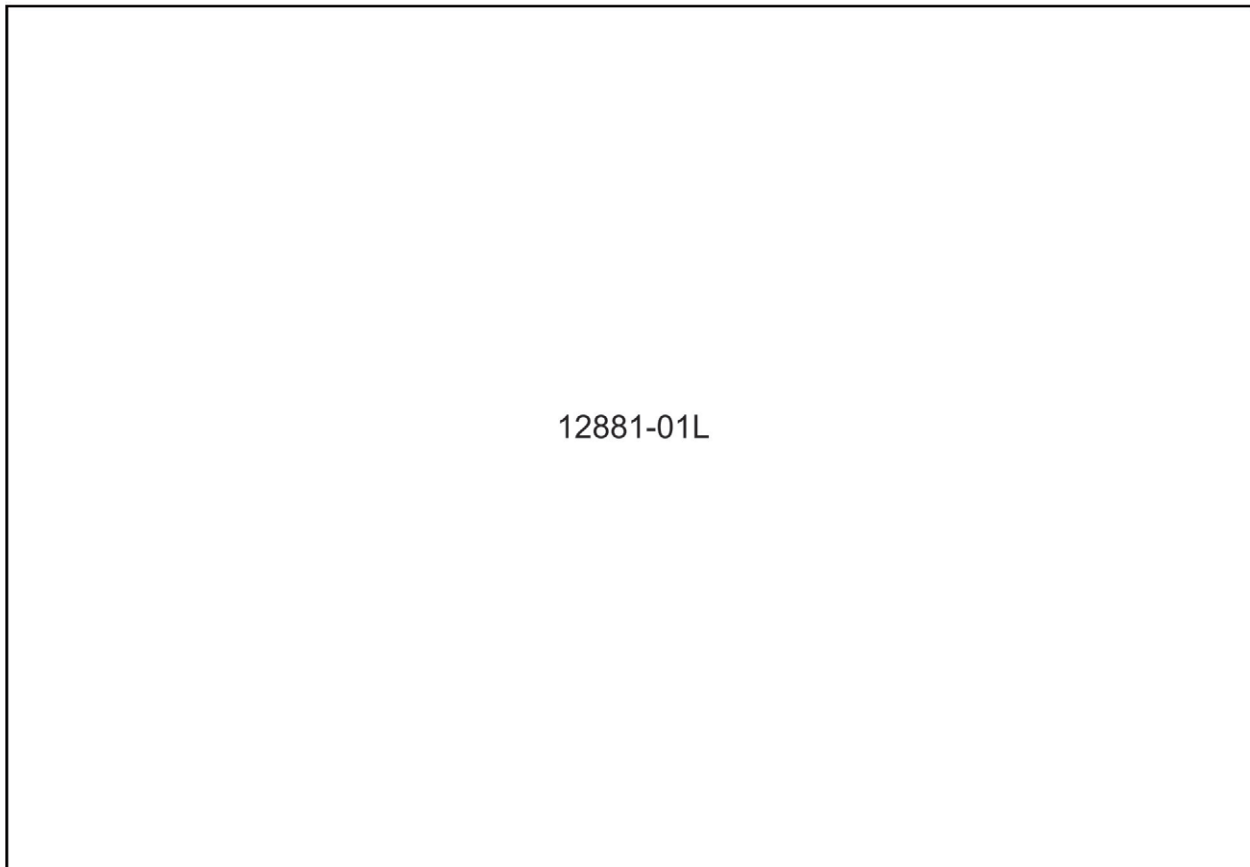
APPLIQUE PATTERNS



Print at 100%. No scaling. This box measures 1" x 1". Use the box as an accuracy guide when printing templates.



12881-01L

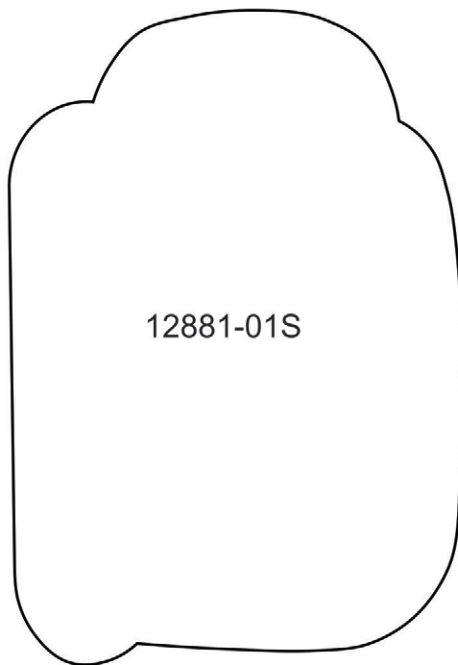


12881-01L

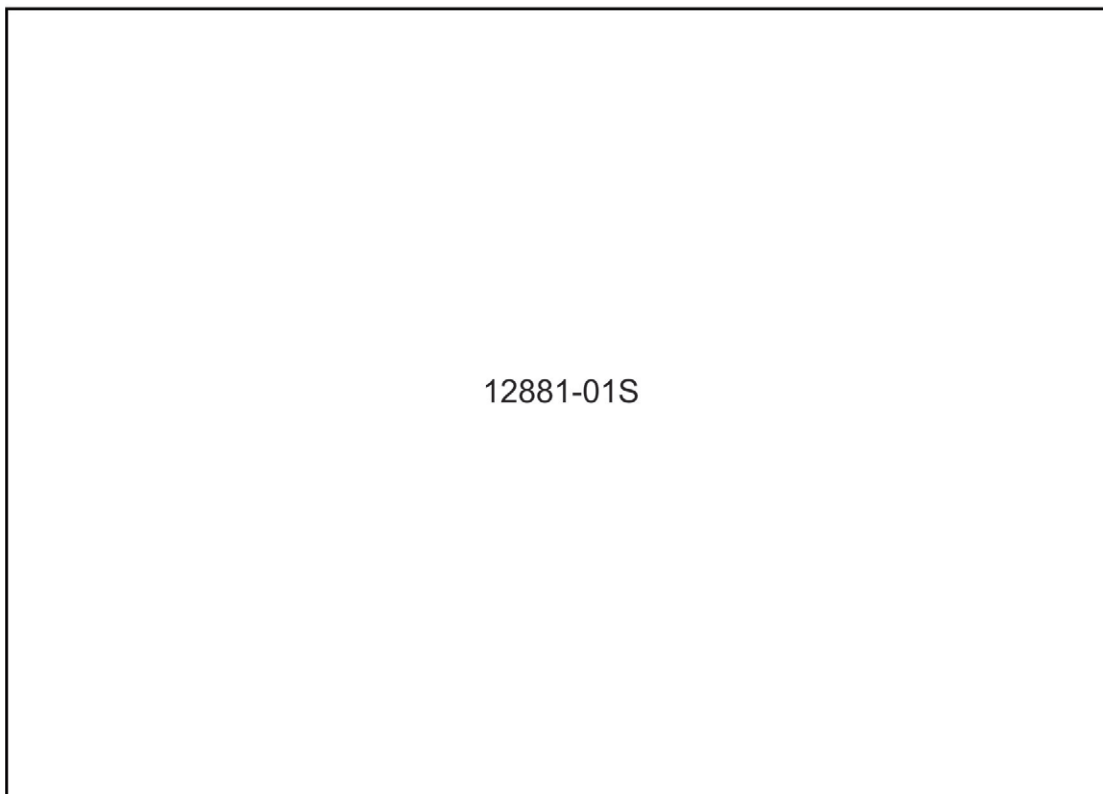
APPLIQUE PATTERNS



Print at 100%. No scaling. This box measures 1" x 1". Use the box as an accuracy guide when printing templates.



12881-01S

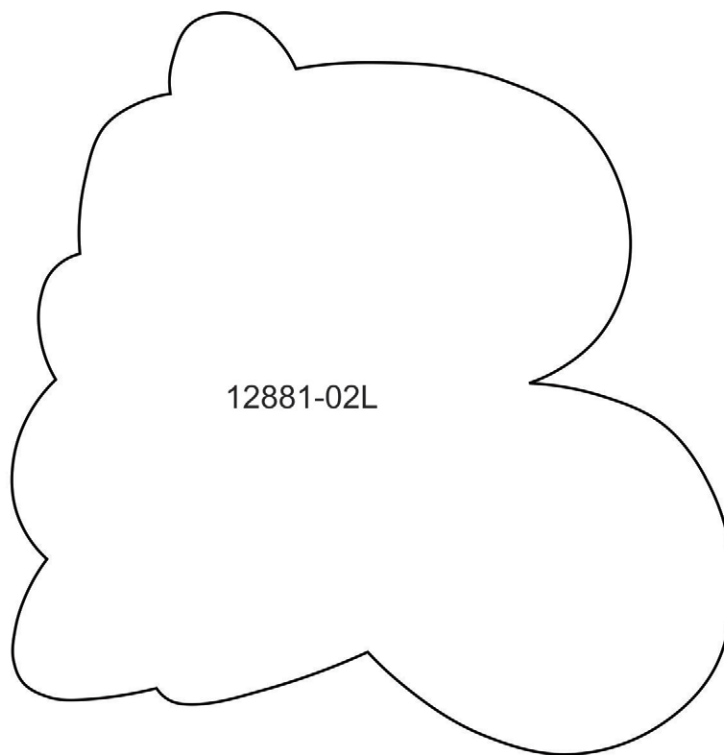


12881-01S

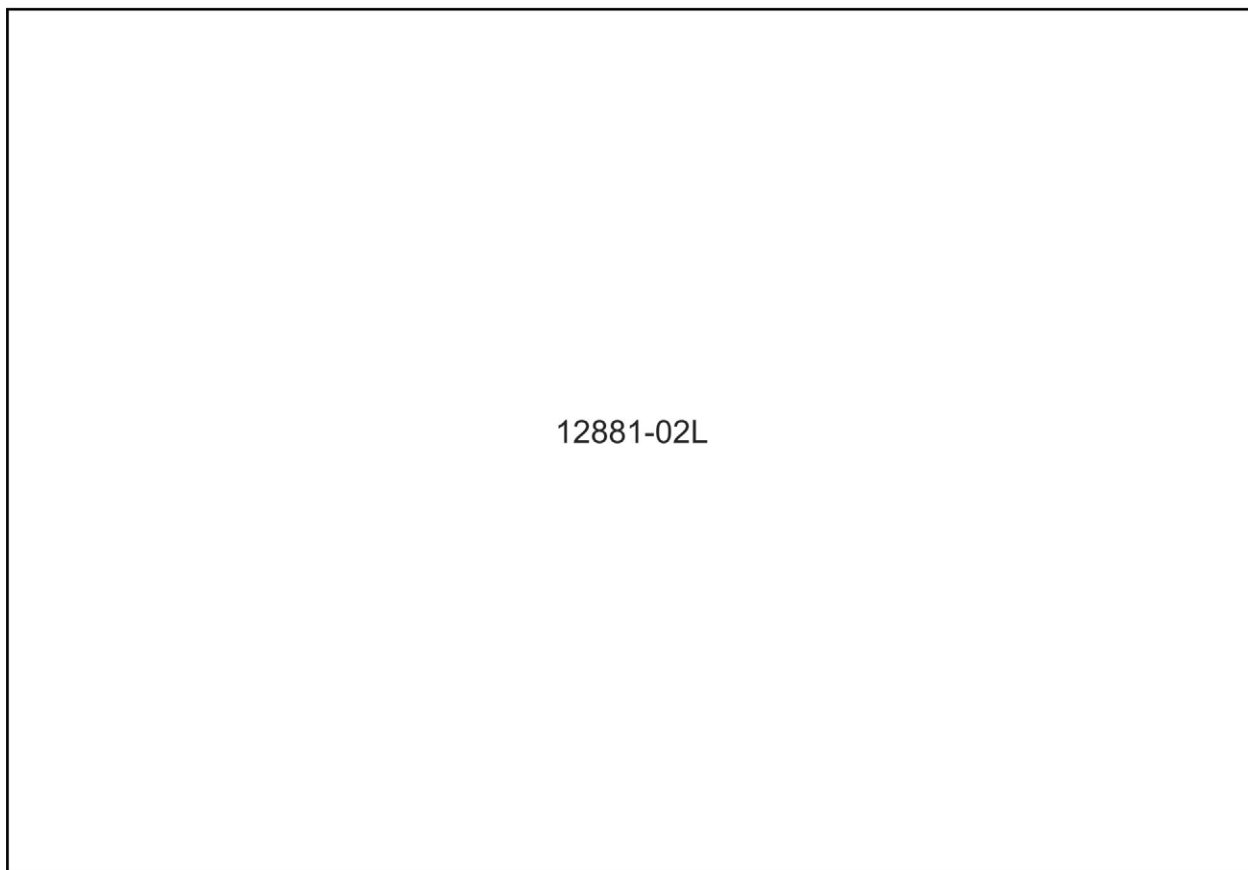
APPLIQUE PATTERNS



Print at 100%. No scaling. This box measures 1" x 1". Use the box as an accuracy guide when printing templates.



12881-02L

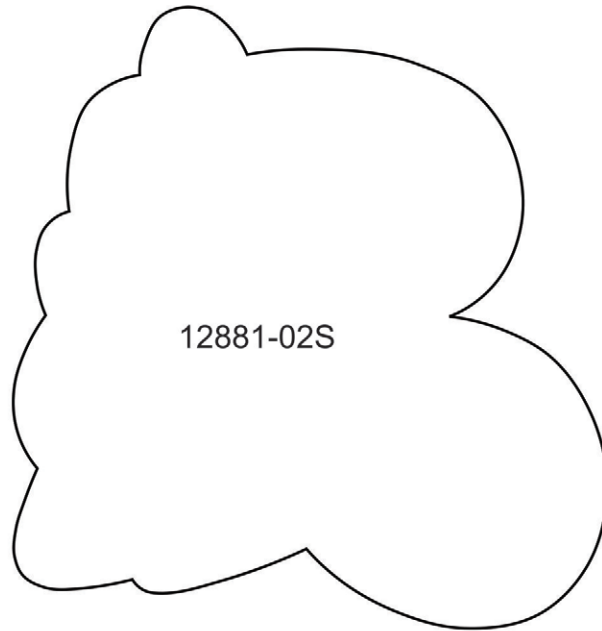


12881-02L

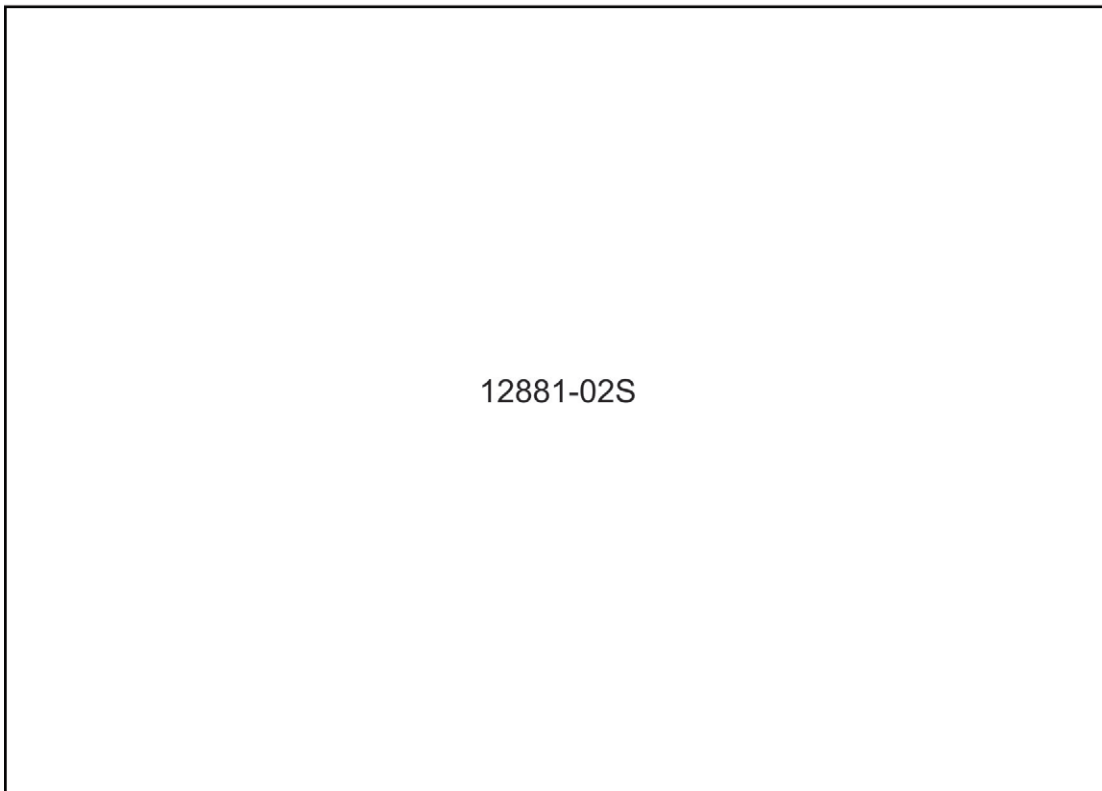
APPLIQUE PATTERNS



Print at 100%. No scaling. This box measures 1" x 1". Use the box as an accuracy guide when printing templates.



12881-02S

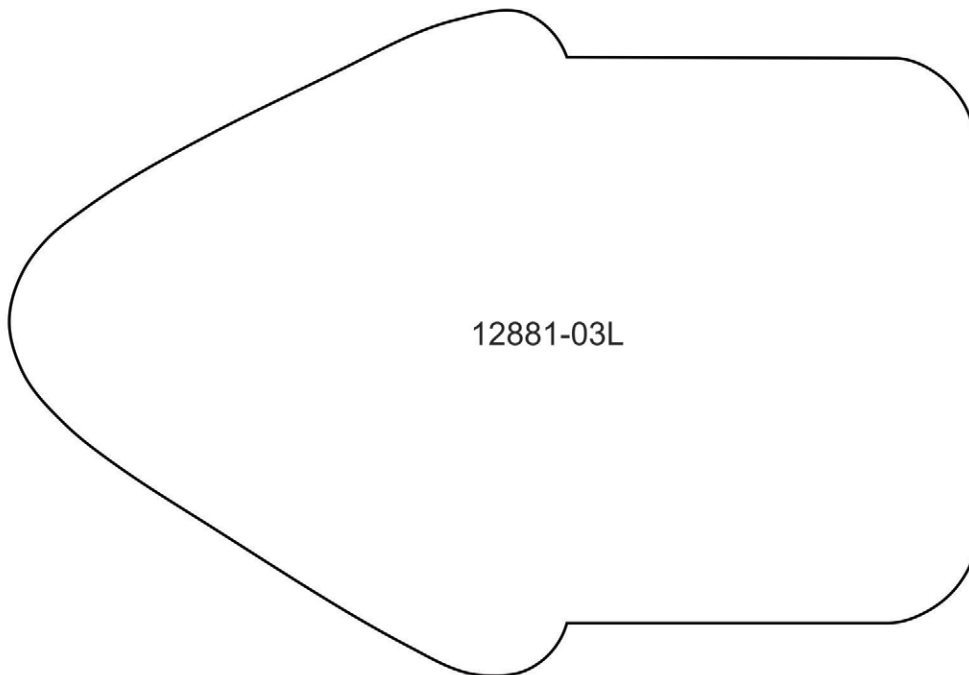


12881-02S

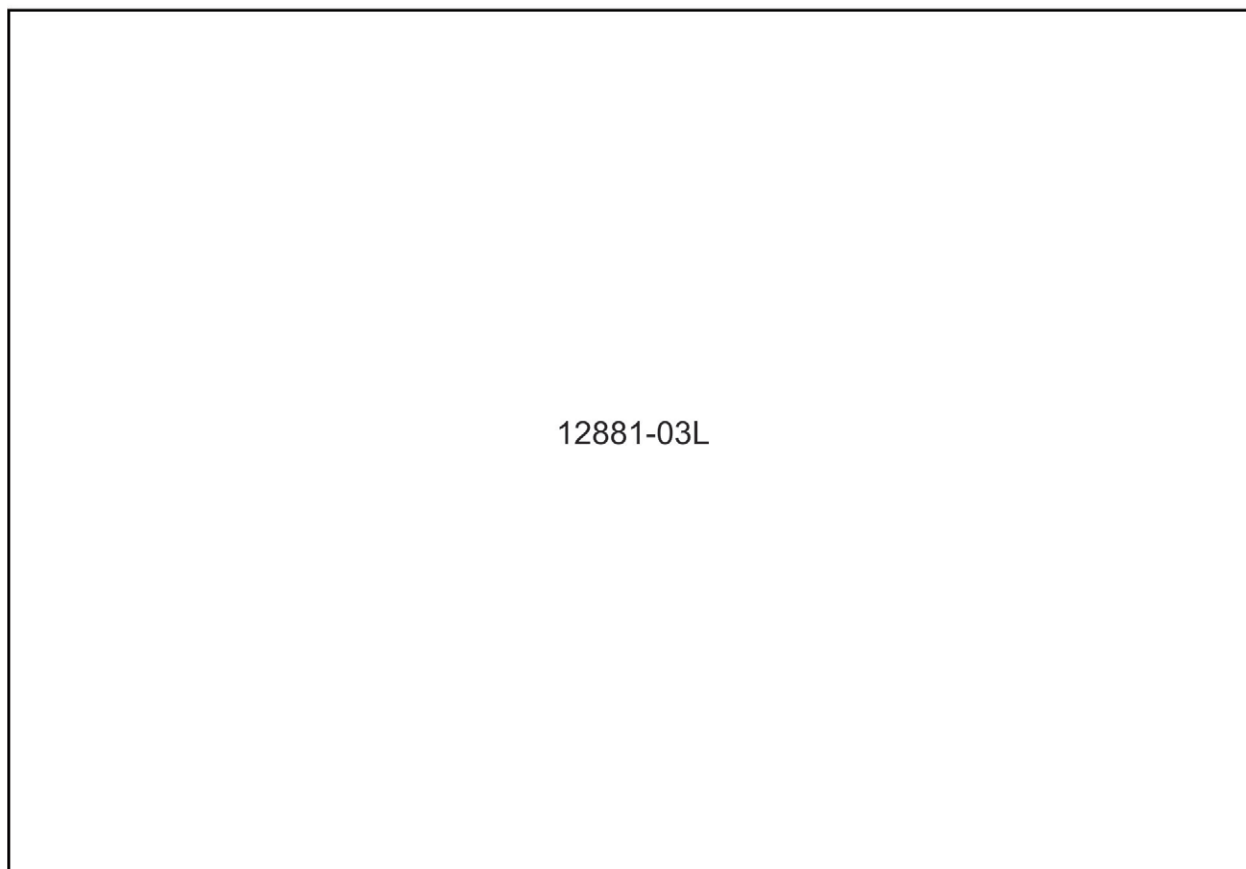
APPLIQUE PATTERNS



Print at 100%. No scaling. This box measures 1" x 1". Use the box as an accuracy guide when printing templates.



12881-03L

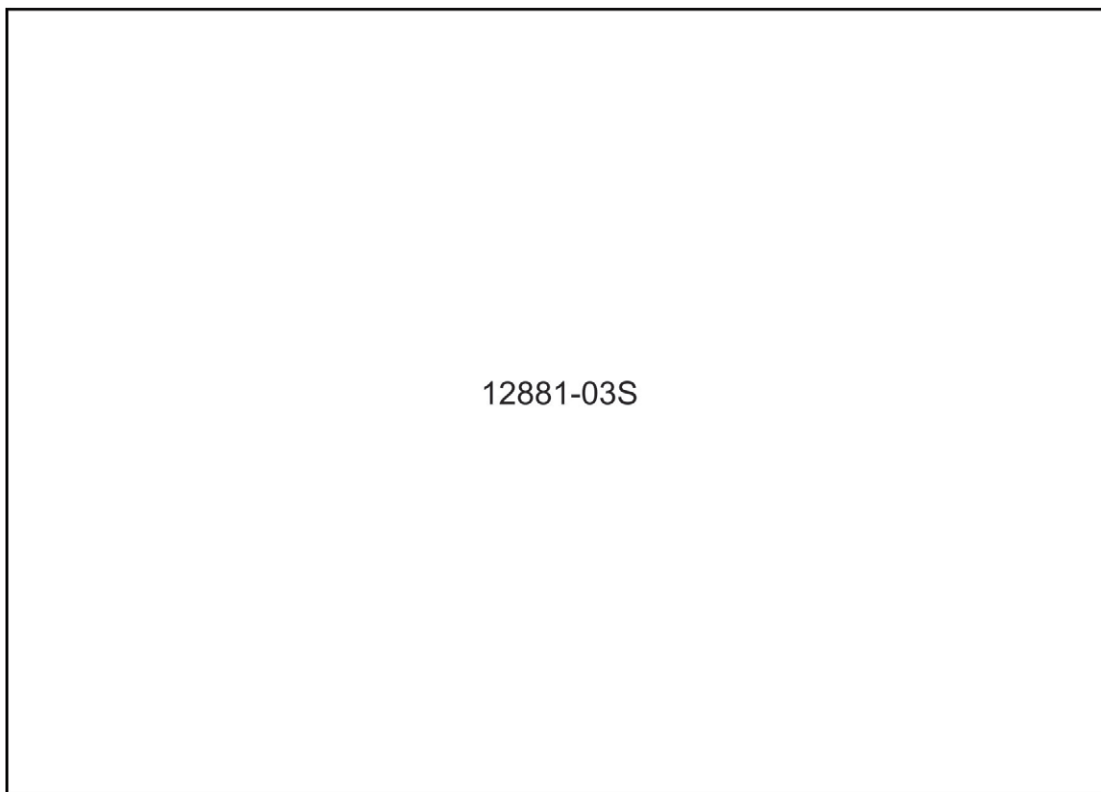
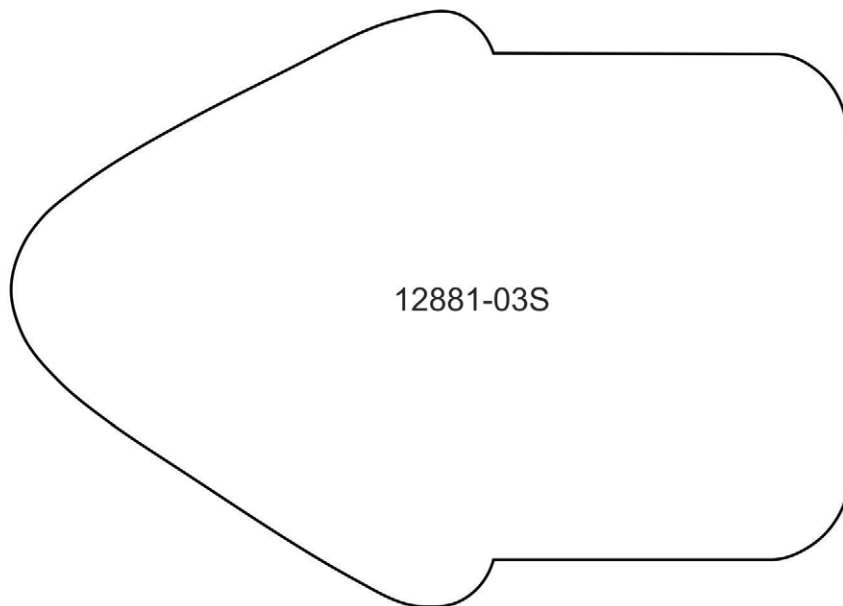


12881-03L

APPLIQUE PATTERNS



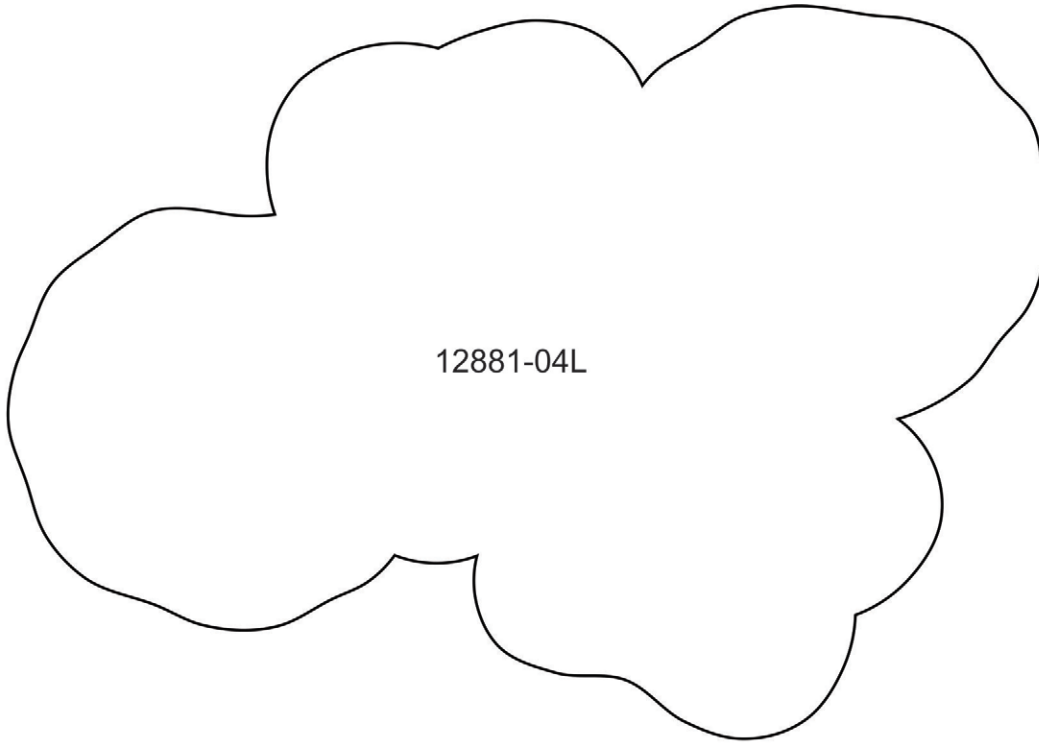
Print at 100%. No scaling. This box measures 1" x 1". Use the box as an accuracy guide when printing templates.



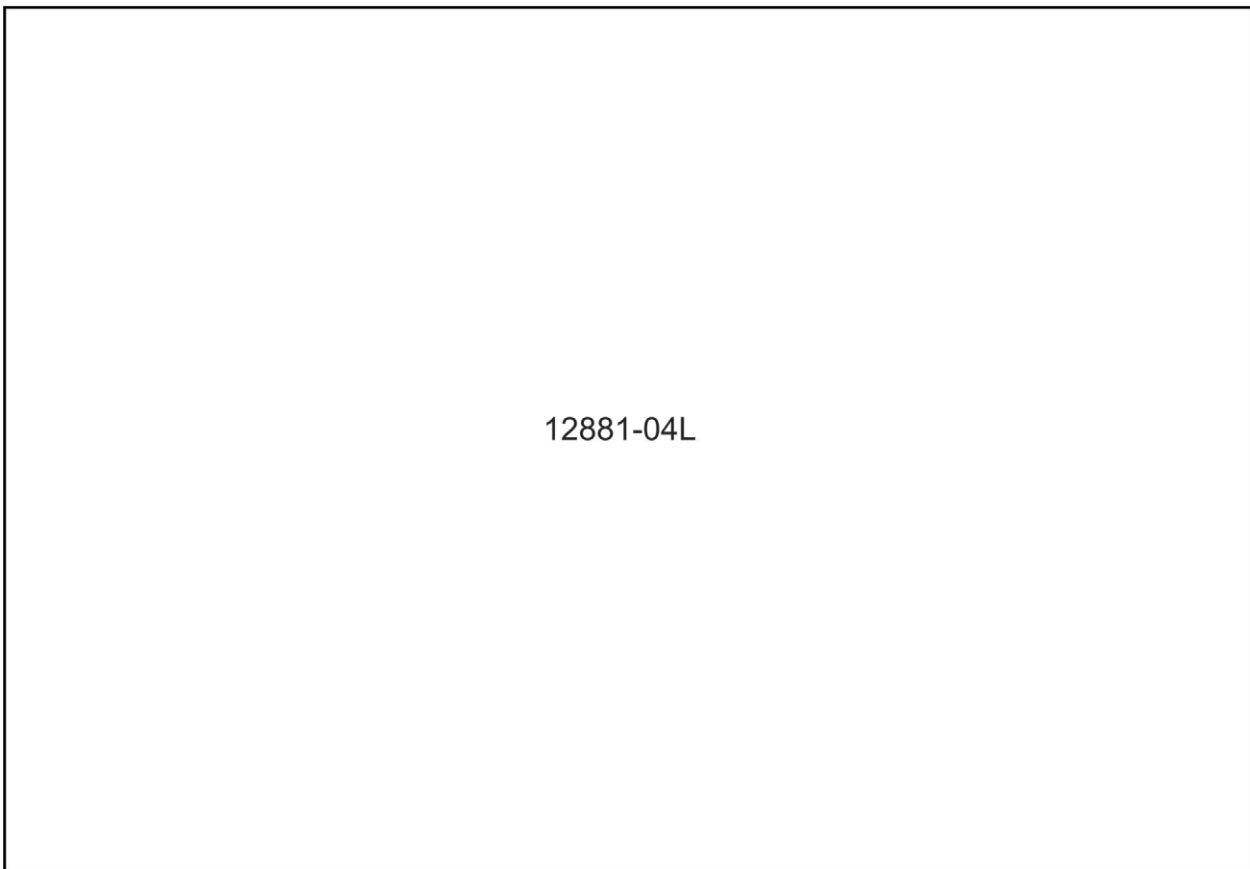
APPLIQUE PATTERNS



Print at 100%. No scaling. This box measures 1" x 1". Use the box as an accuracy guide when printing templates.



12881-04L

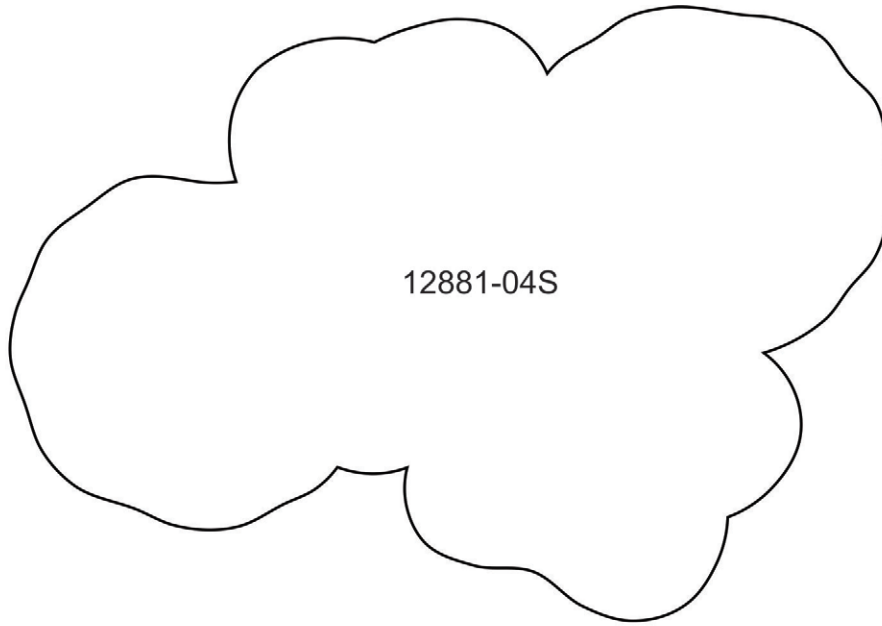


12881-04L

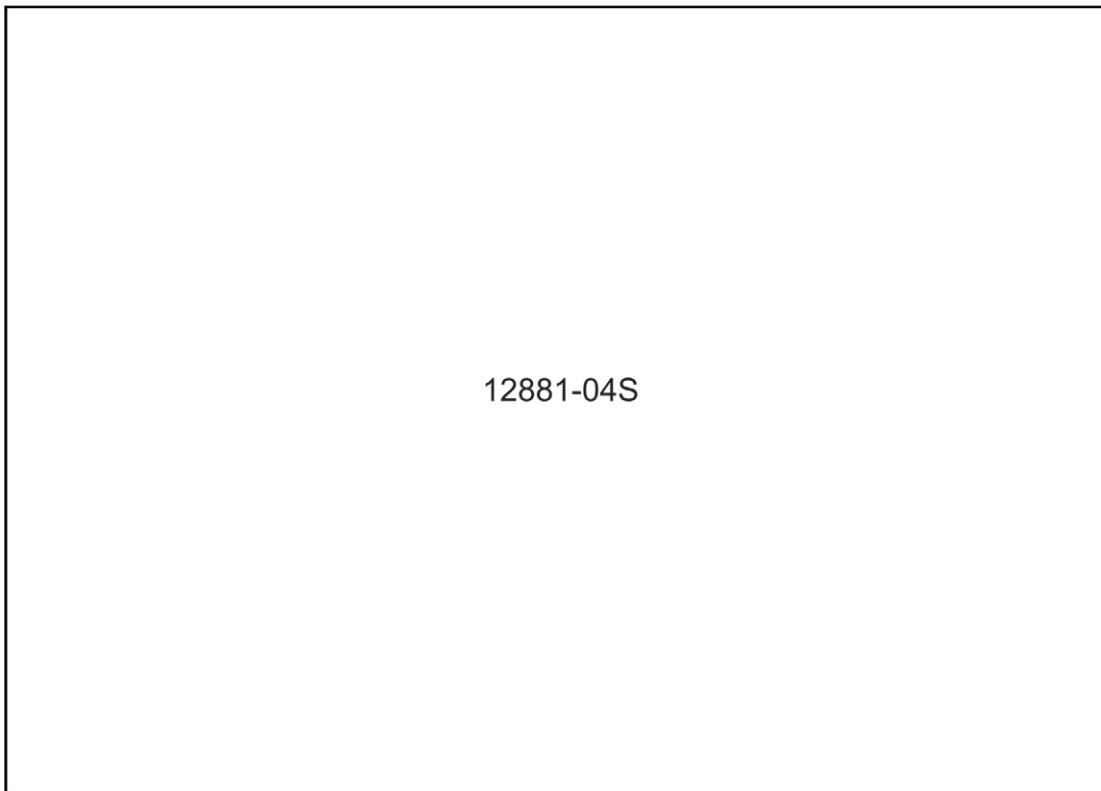
APPLIQUE PATTERNS



Print at 100%. No scaling. This box measures 1" x 1". Use the box as an accuracy guide when printing templates.



12881-04S



12881-04S

APPLIQUE PATTERNS



Print at 100%. No scaling. This box measures 1" x 1". Use the box as an accuracy guide when printing templates.

12881-05L

APPLIQUE PATTERNS



Print at 100%. No scaling. This box measures 1" x 1". Use the box as an accuracy guide when printing templates.

12881-05S

APPLIQUE PATTERNS



Print at 100%. No scaling. This box measures 1" x 1". Use the box as an accuracy guide when printing templates.

12881-06L

APPLIQUE PATTERNS



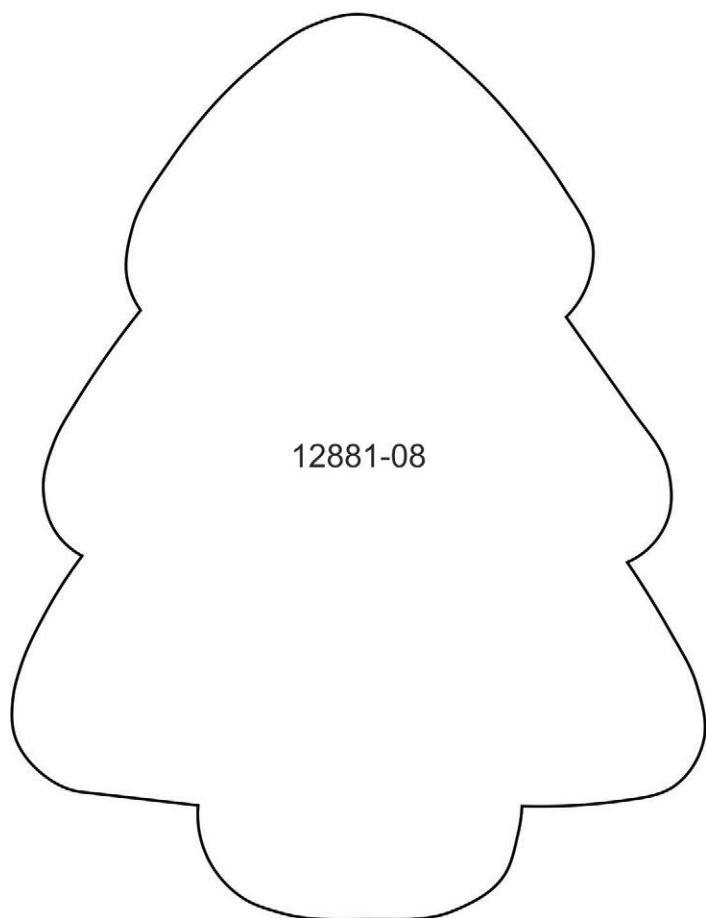
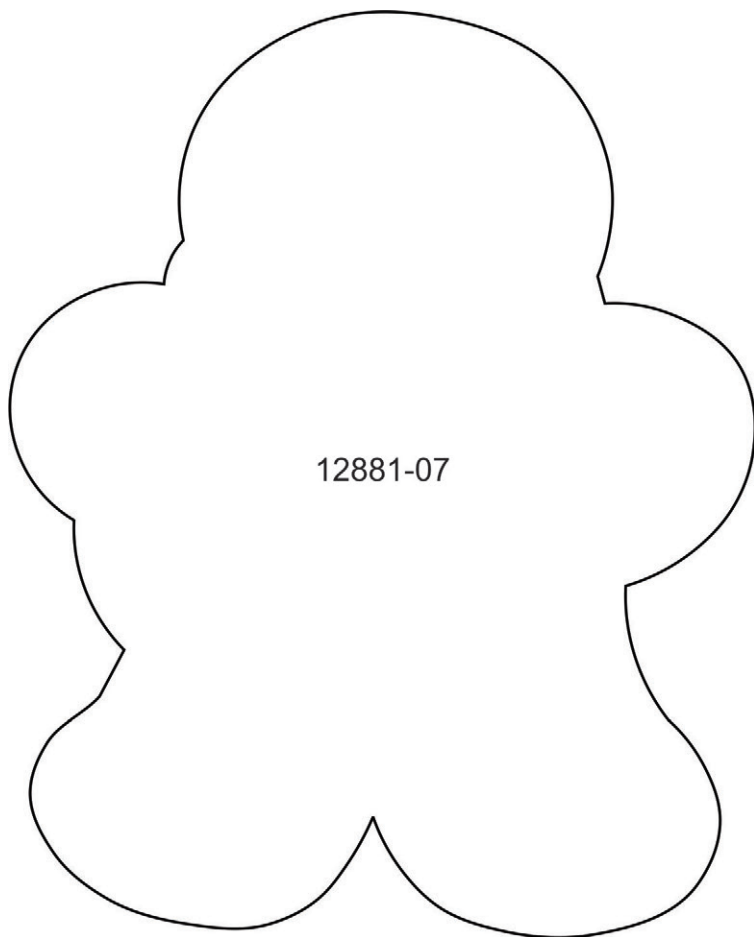
Print at 100%. No scaling. This box measures 1" x 1". Use the box as an accuracy guide when printing templates.

12881-06S

APPLIQUE PATTERNS



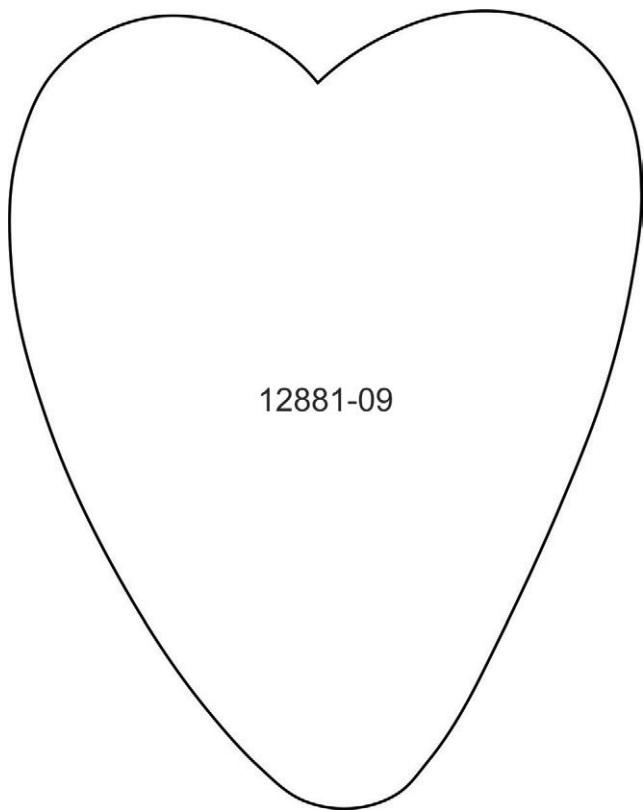
Print at 100%. No scaling. This box measures 1" x 1". Use the box as an accuracy guide when printing templates.



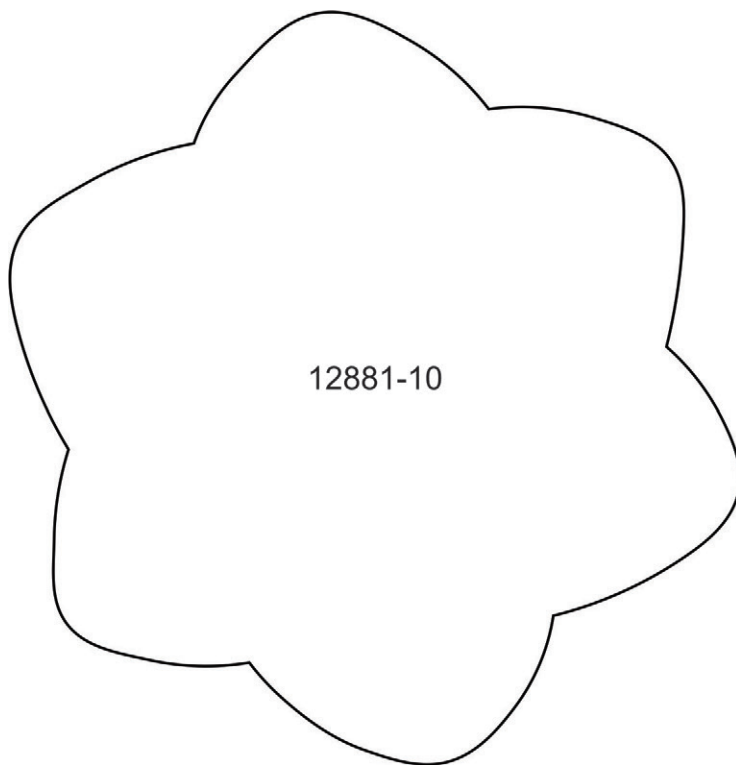
APPLIQUE PATTERNS



Print at 100%. No scaling. This box measures 1" x 1". Use the box as an accuracy guide when printing templates.



12881-09

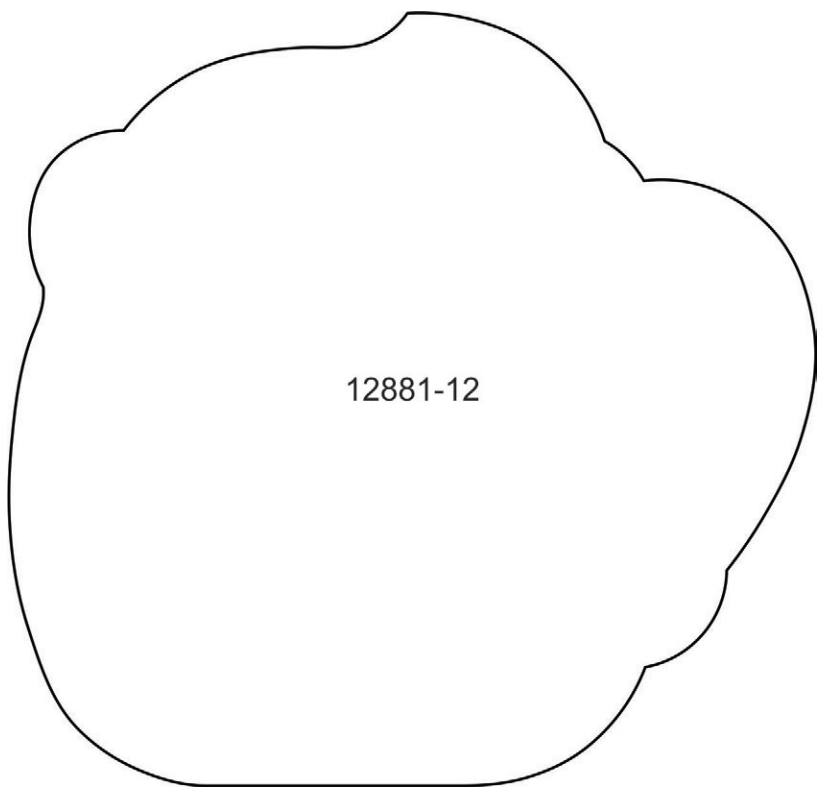


12881-10

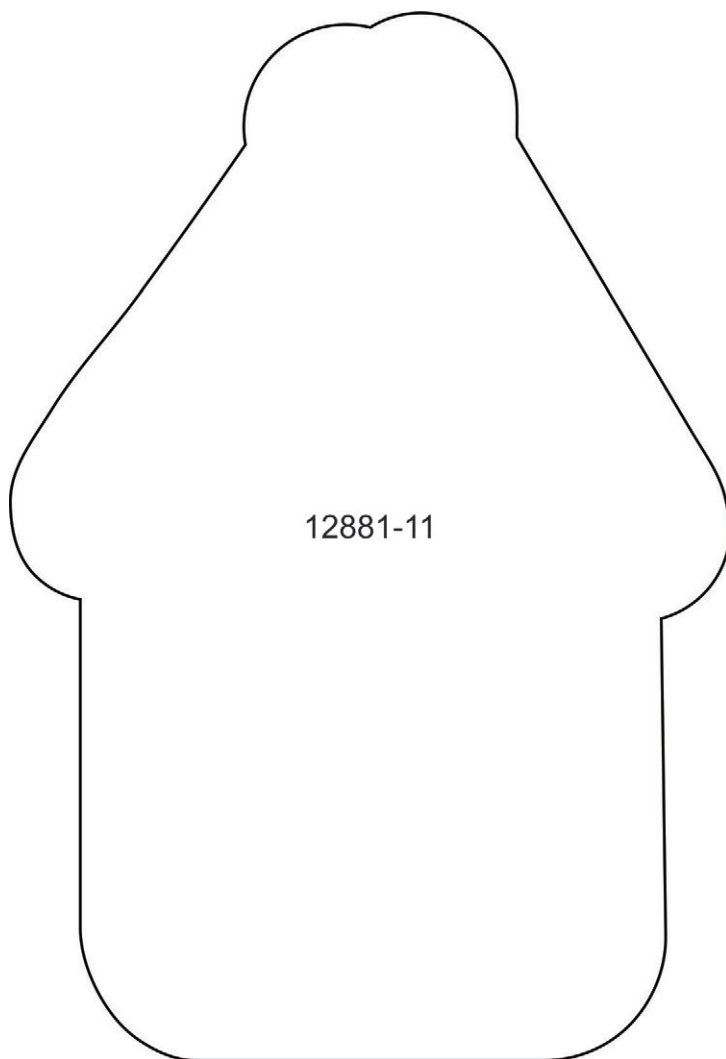
APPLIQUE PATTERNS



Print at 100%. No scaling. This box measures 1" x 1". Use the box as an accuracy guide when printing templates.



12881-12

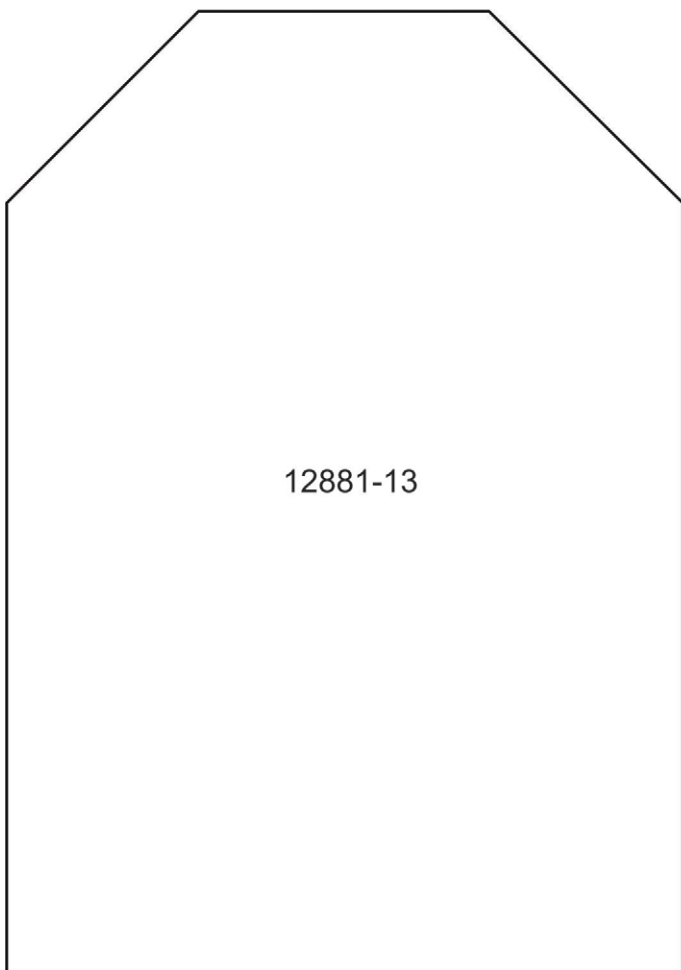


12881-11

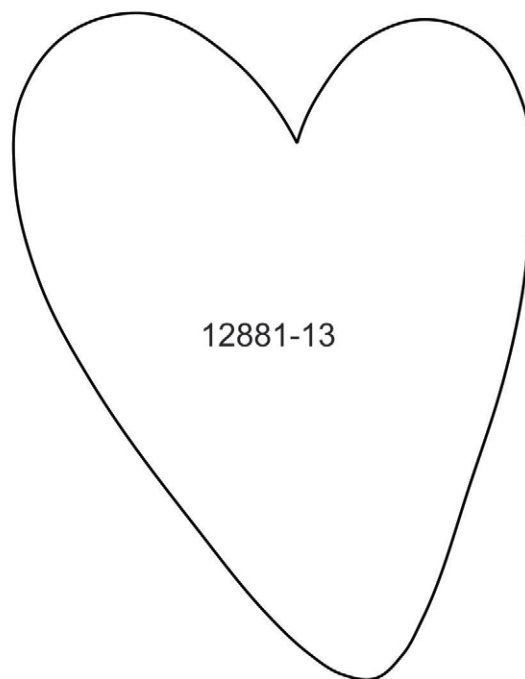
APPLIQUE PATTERNS



Print at 100%. No scaling. This box measures 1" x 1". Use the box as an accuracy guide when printing templates.



12881-13

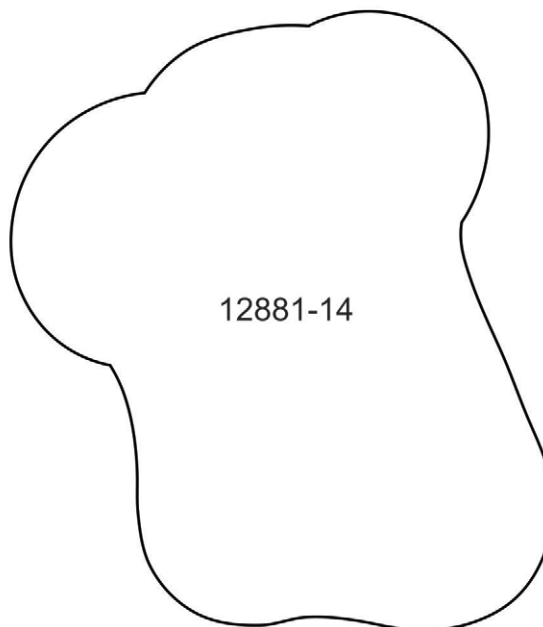
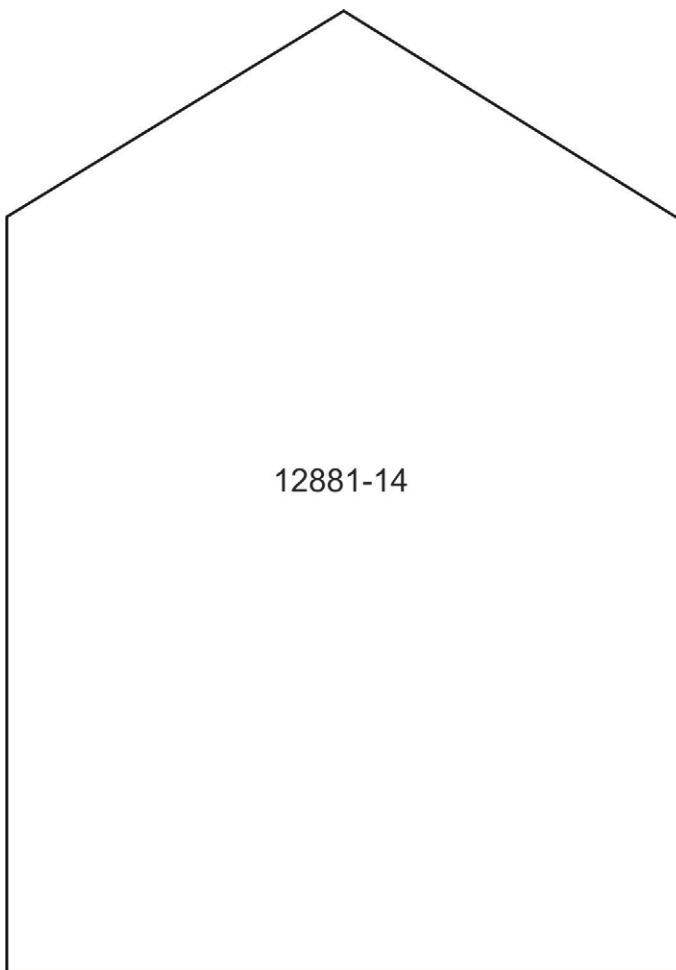


12881-13

APPLIQUE PATTERNS



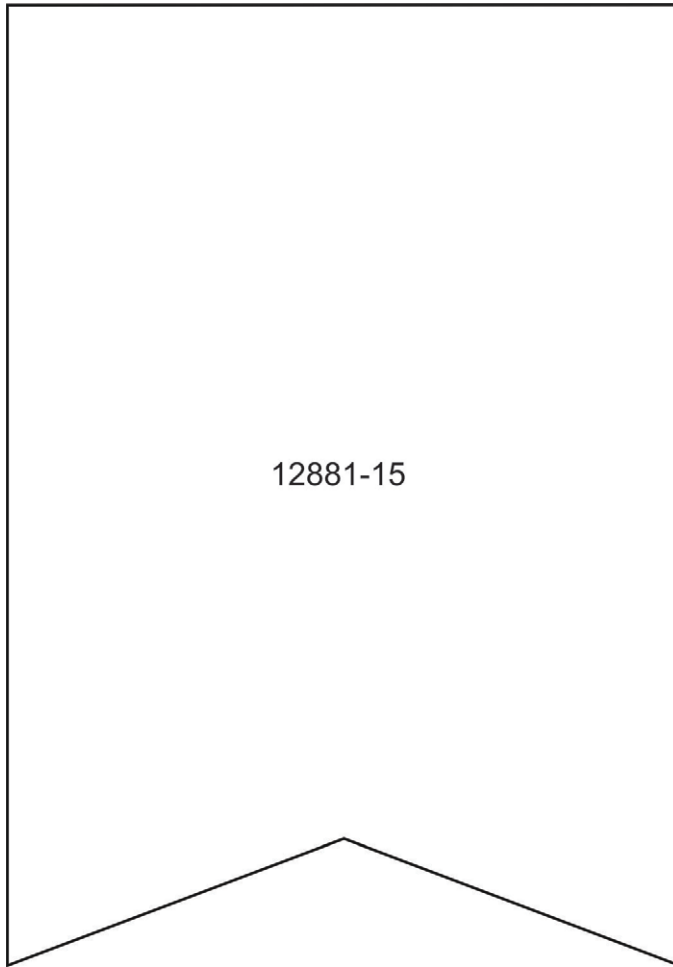
Print at 100%. No scaling. This box measures 1" x 1". Use the box as an accuracy guide when printing templates.



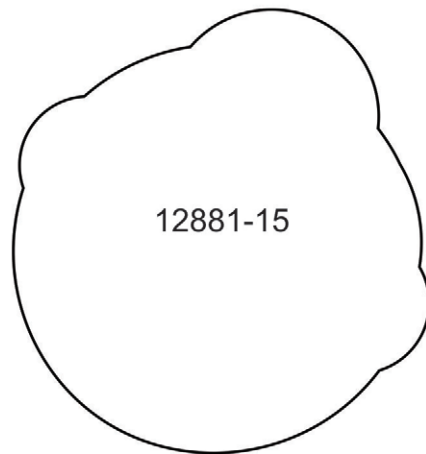
APPLIQUE PATTERNS



Print at 100%. No scaling. This box measures 1" x 1". Use the box as an accuracy guide when printing templates.



12881-15

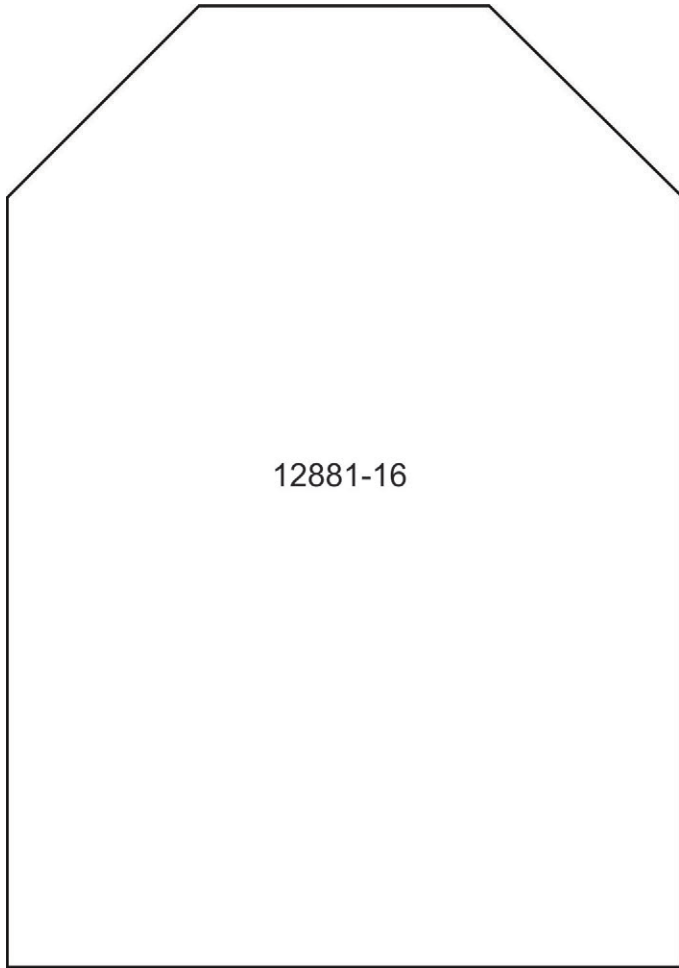


12881-15

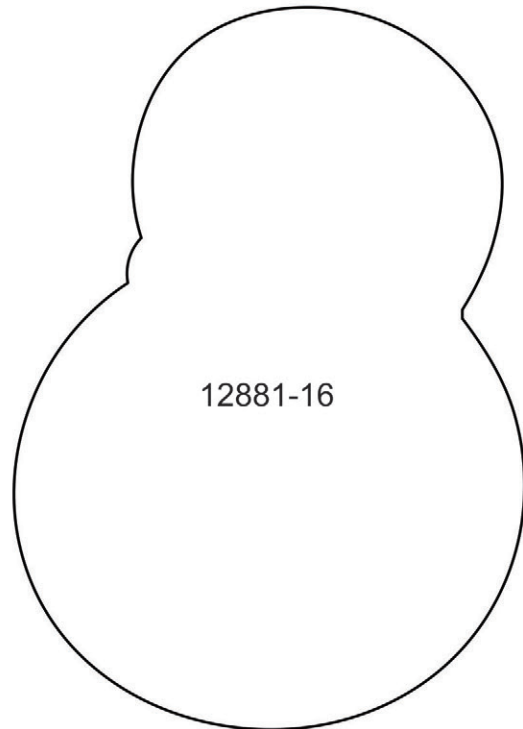
APPLIQUE PATTERNS



Print at 100%. No scaling. This box measures 1" x 1". Use the box as an accuracy guide when printing templates.



12881-16

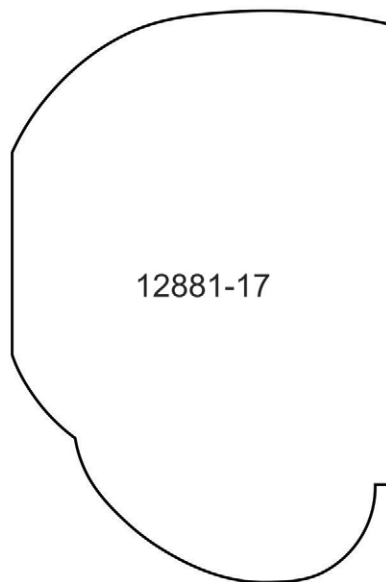
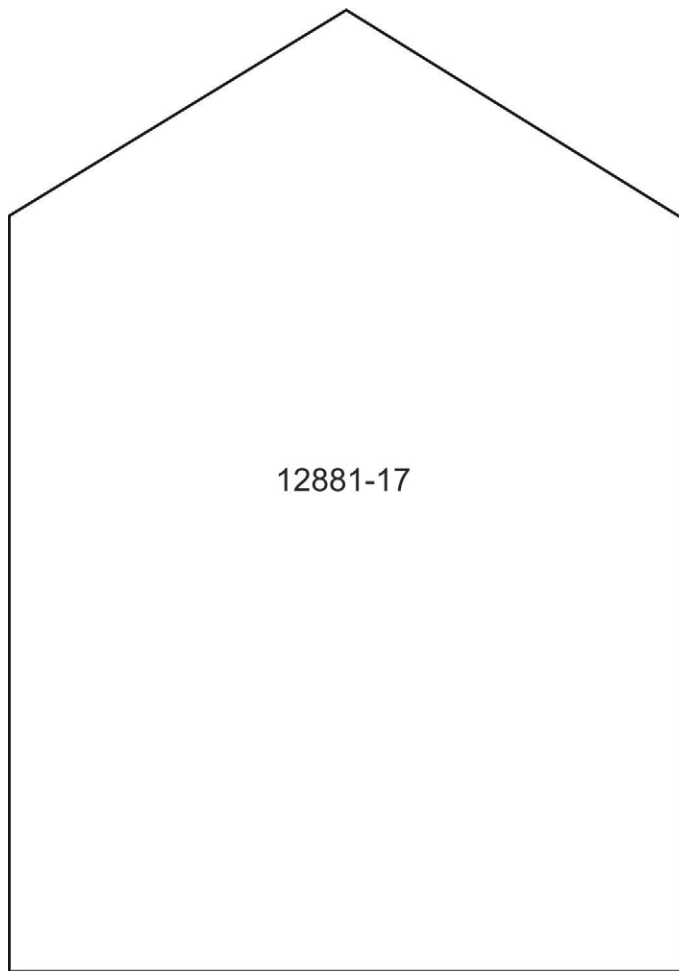


12881-16

APPLIQUE PATTERNS



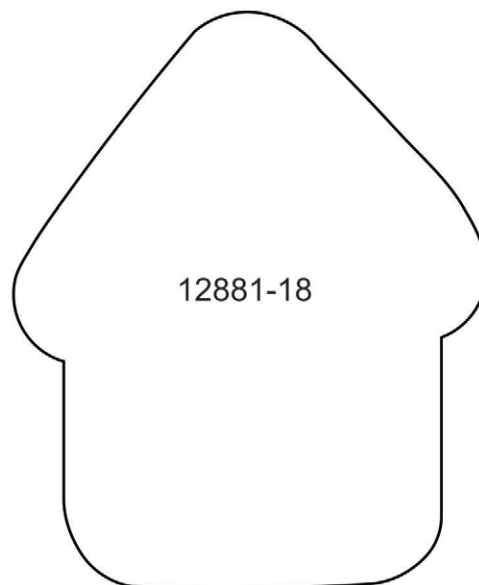
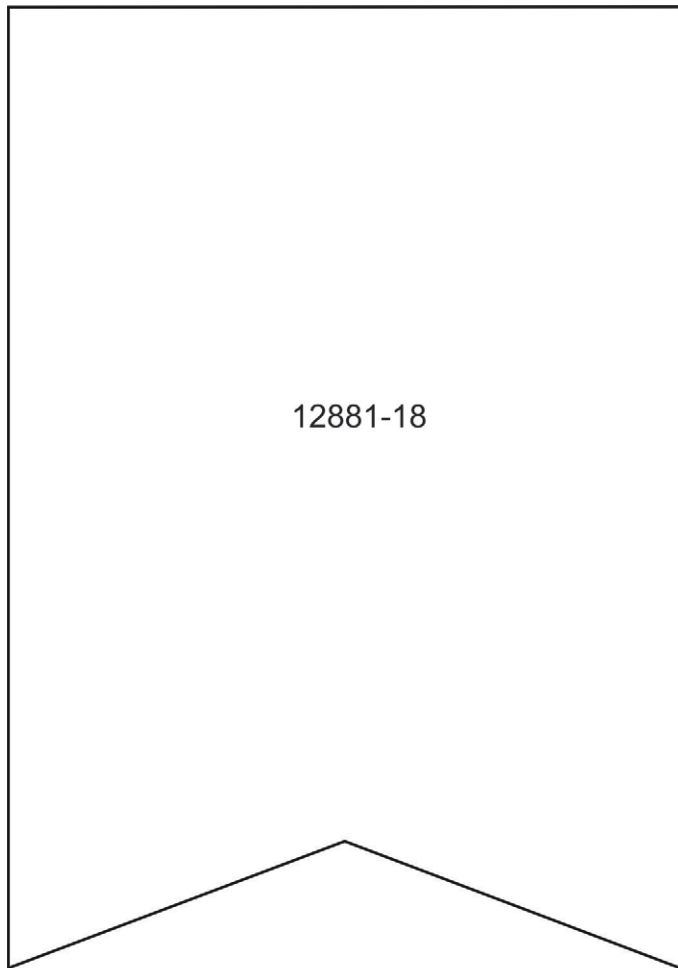
Print at 100%. No scaling. This box measures 1" x 1". Use the box as an accuracy guide when printing templates.



APPLIQUE PATTERNS



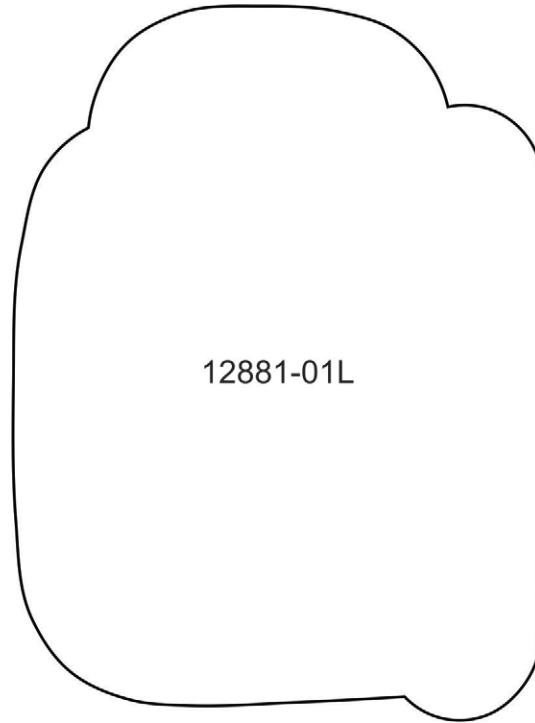
Print at 100%. No scaling. This box measures 1" x 1". Use the box as an accuracy guide when printing templates.



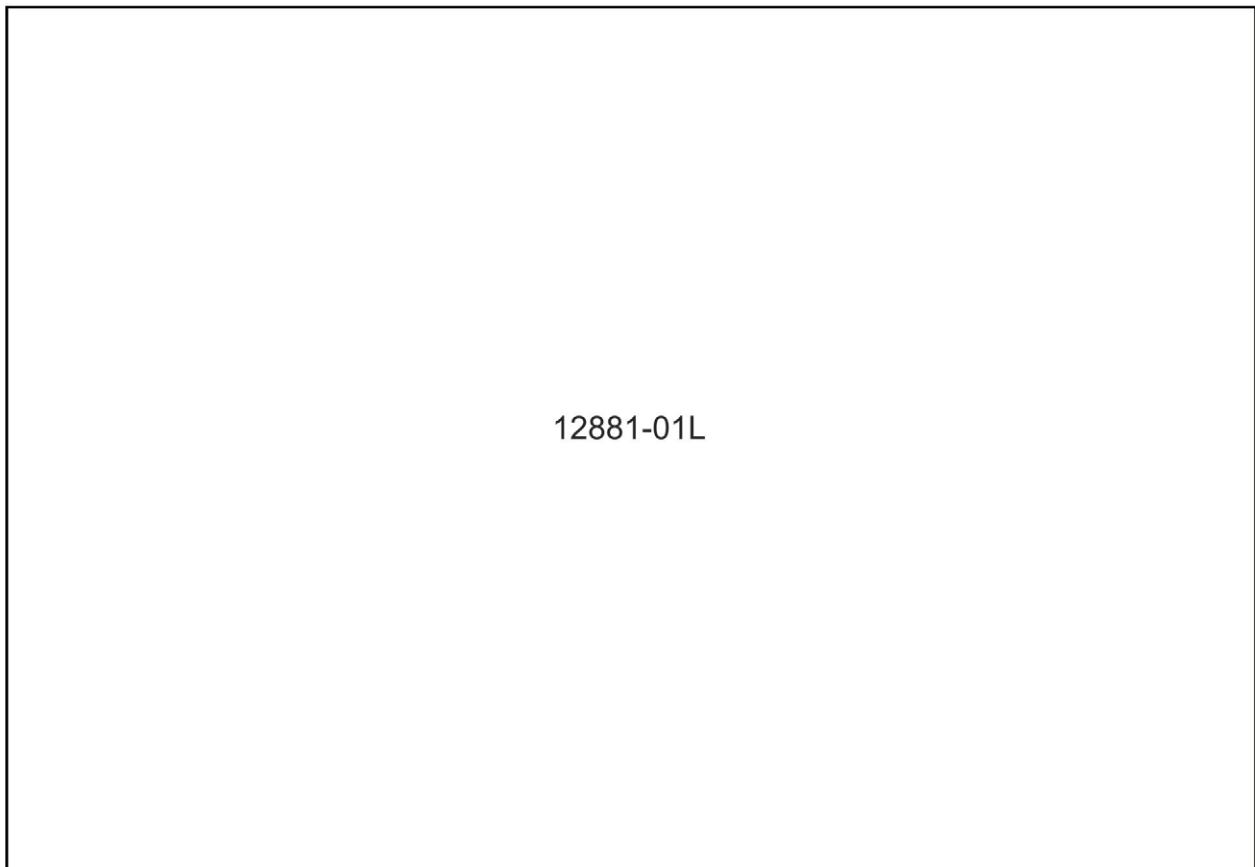
MIRRORED PATTERNS



Print at 100%. No scaling. This box measures 1" x 1". Use the box as an accuracy guide when printing templates.



12881-01L

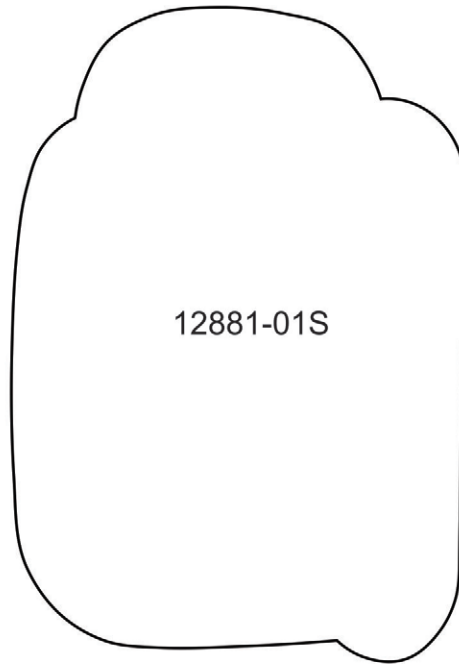


12881-01L

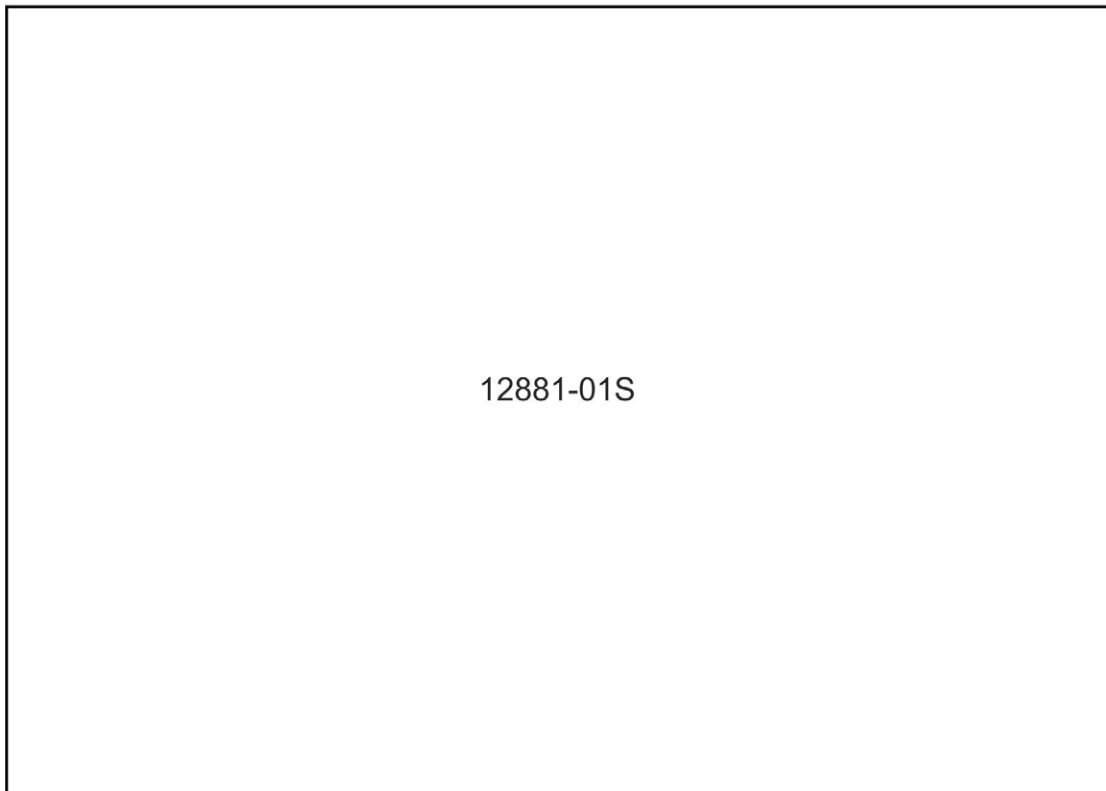
MIRRORED PATTERNS



Print at 100%. No scaling. This box measures 1" x 1". Use the box as an accuracy guide when printing templates.



12881-01S

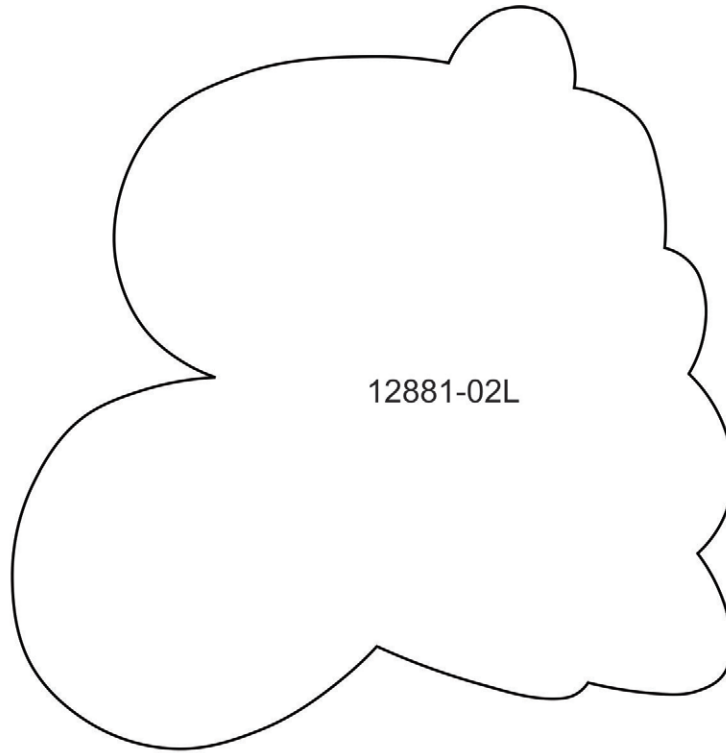


12881-01S

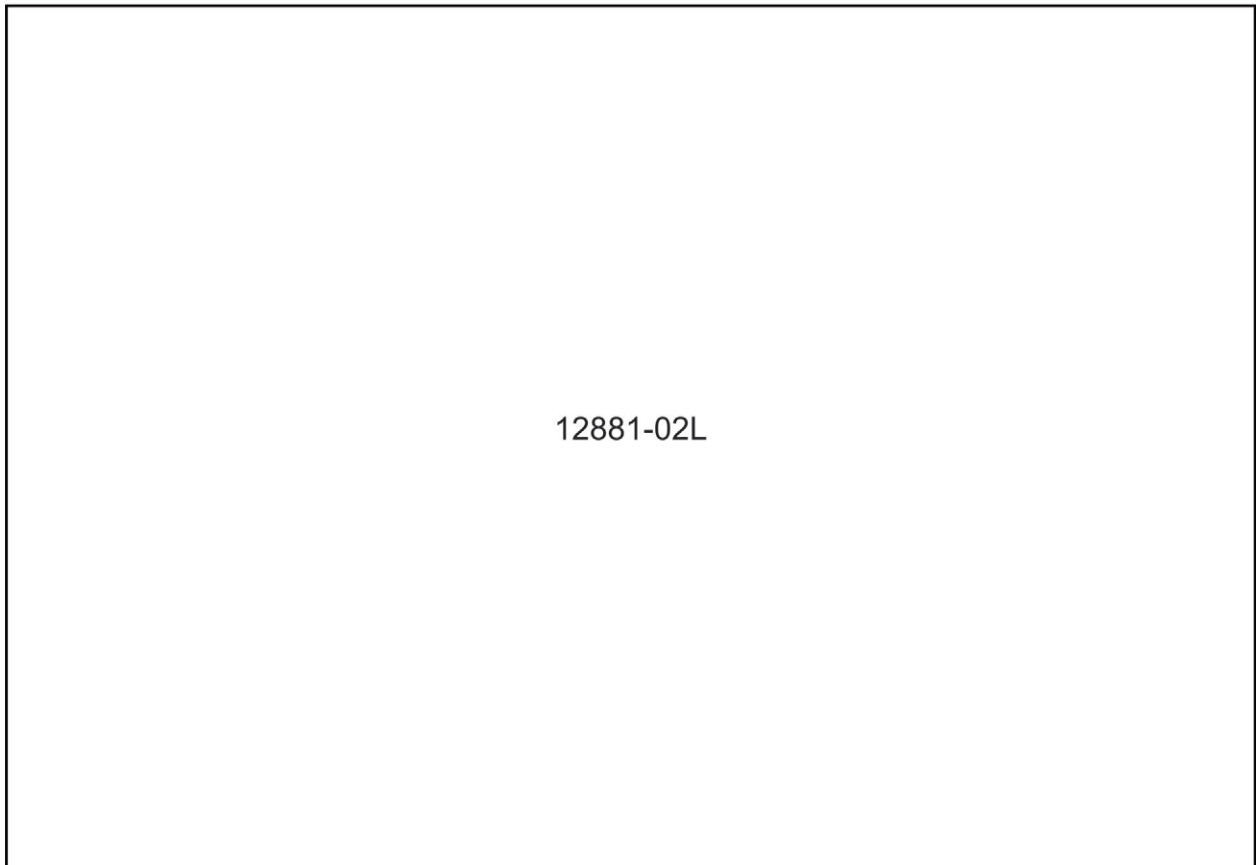
MIRRORED PATTERNS



Print at 100%. No scaling. This box measures 1" x 1". Use the box as an accuracy guide when printing templates.



12881-02L

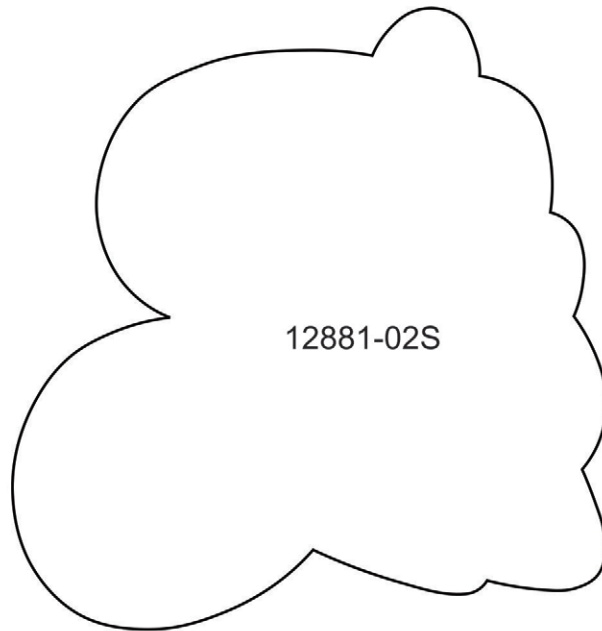


12881-02L

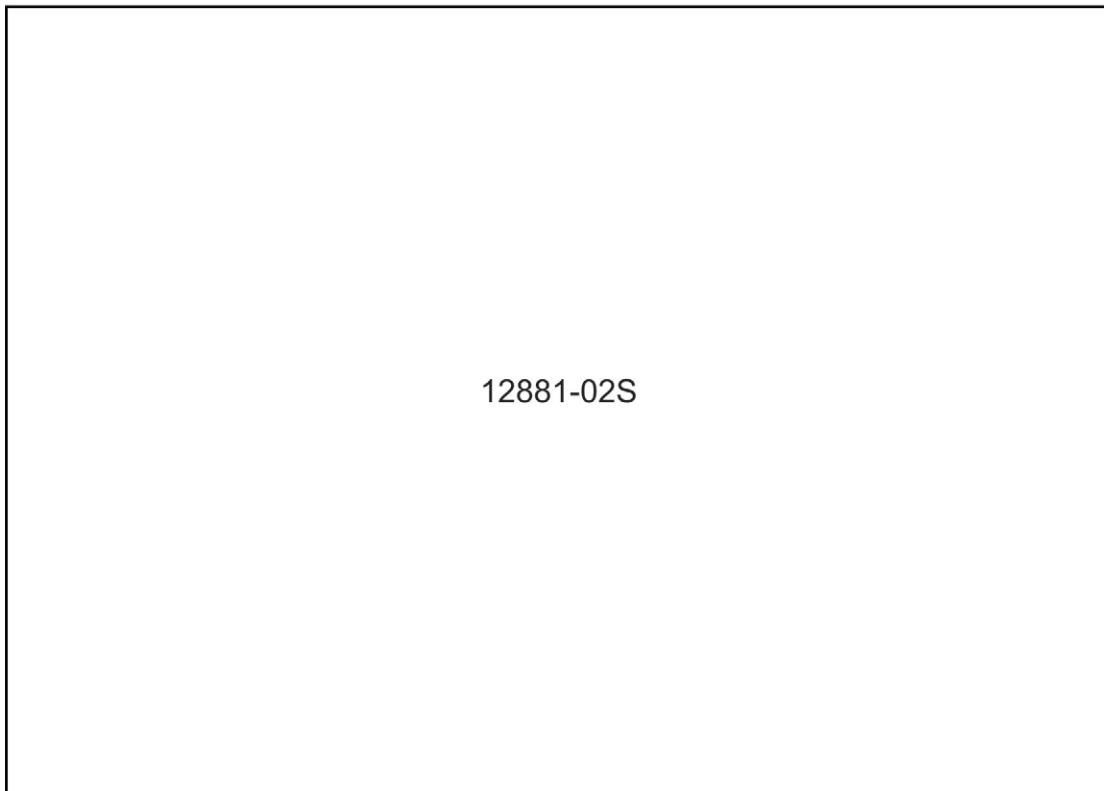
MIRRORED PATTERNS



Print at 100%. No scaling. This box measures 1" x 1". Use the box as an accuracy guide when printing templates.



12881-02S

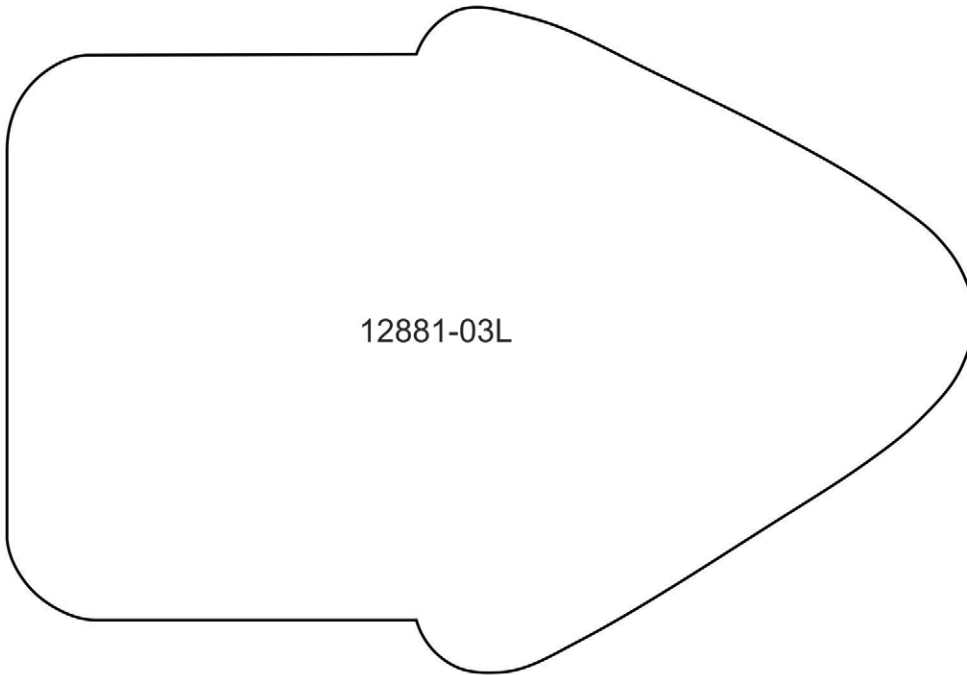


12881-02S

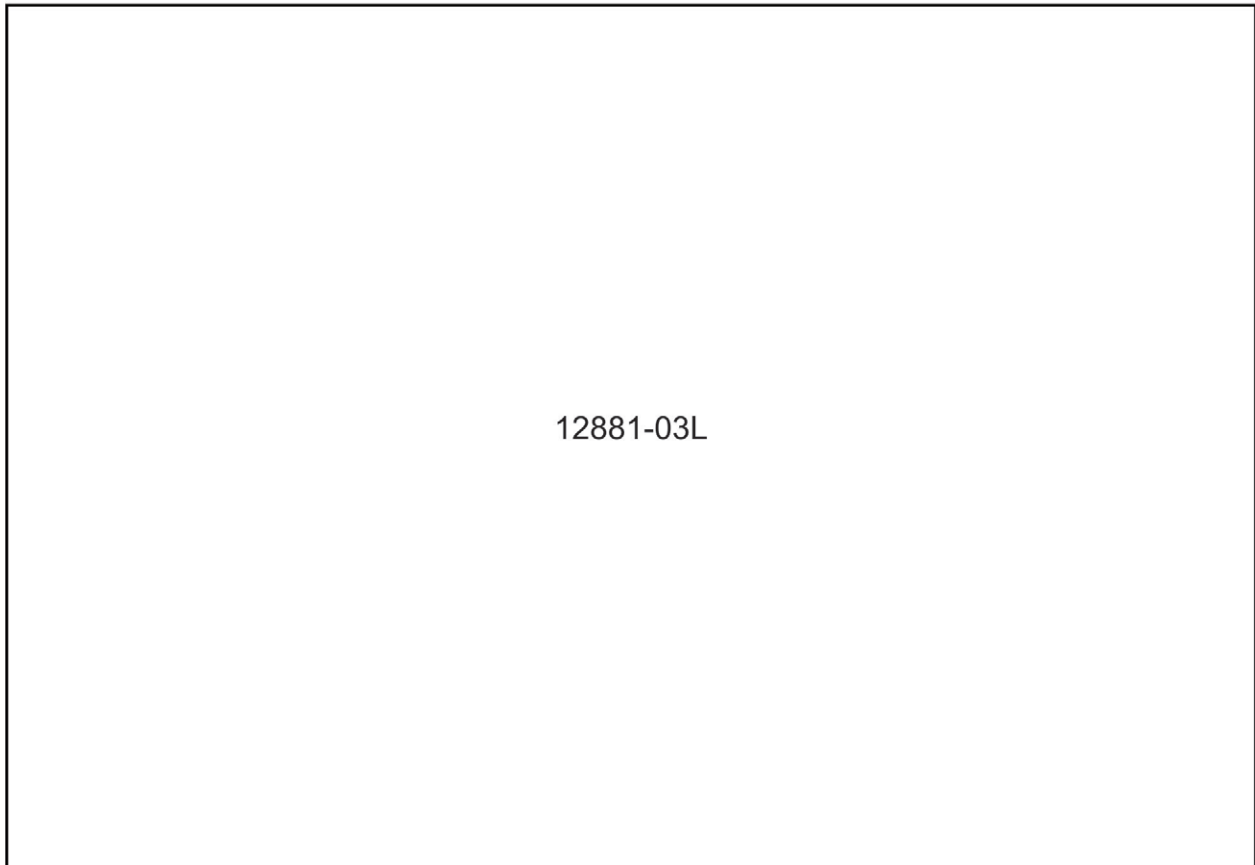
MIRRORED PATTERNS



Print at 100%. No scaling. This box measures 1" x 1". Use the box as an accuracy guide when printing templates.



12881-03L

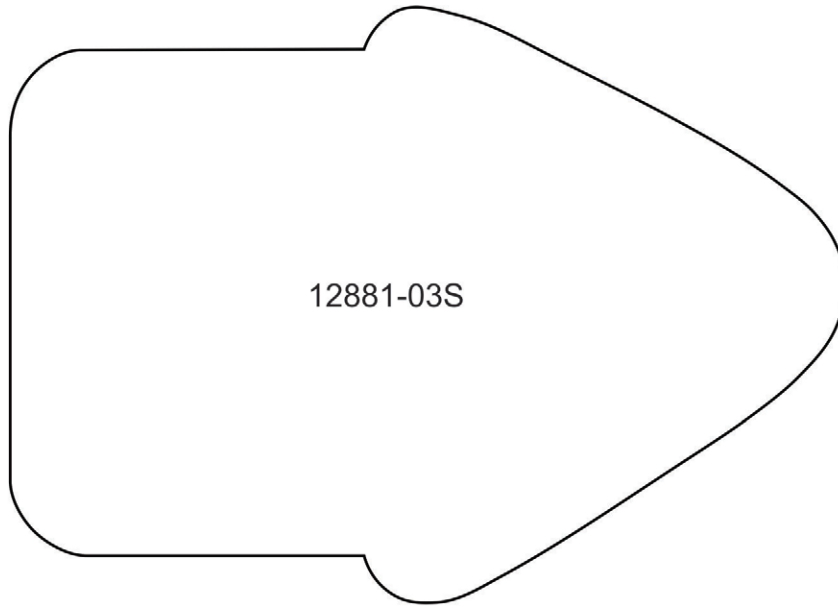


12881-03L

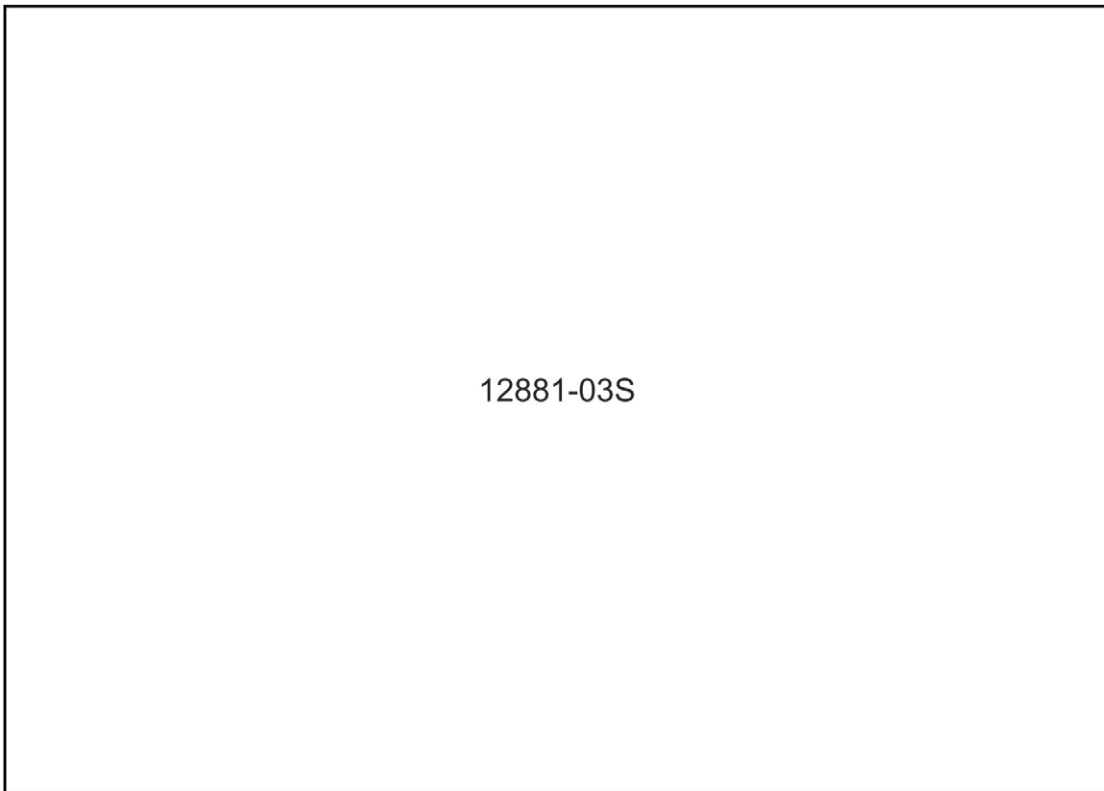
MIRRORED PATTERNS



Print at 100%. No scaling. This box measures 1" x 1". Use the box as an accuracy guide when printing templates.



12881-03S

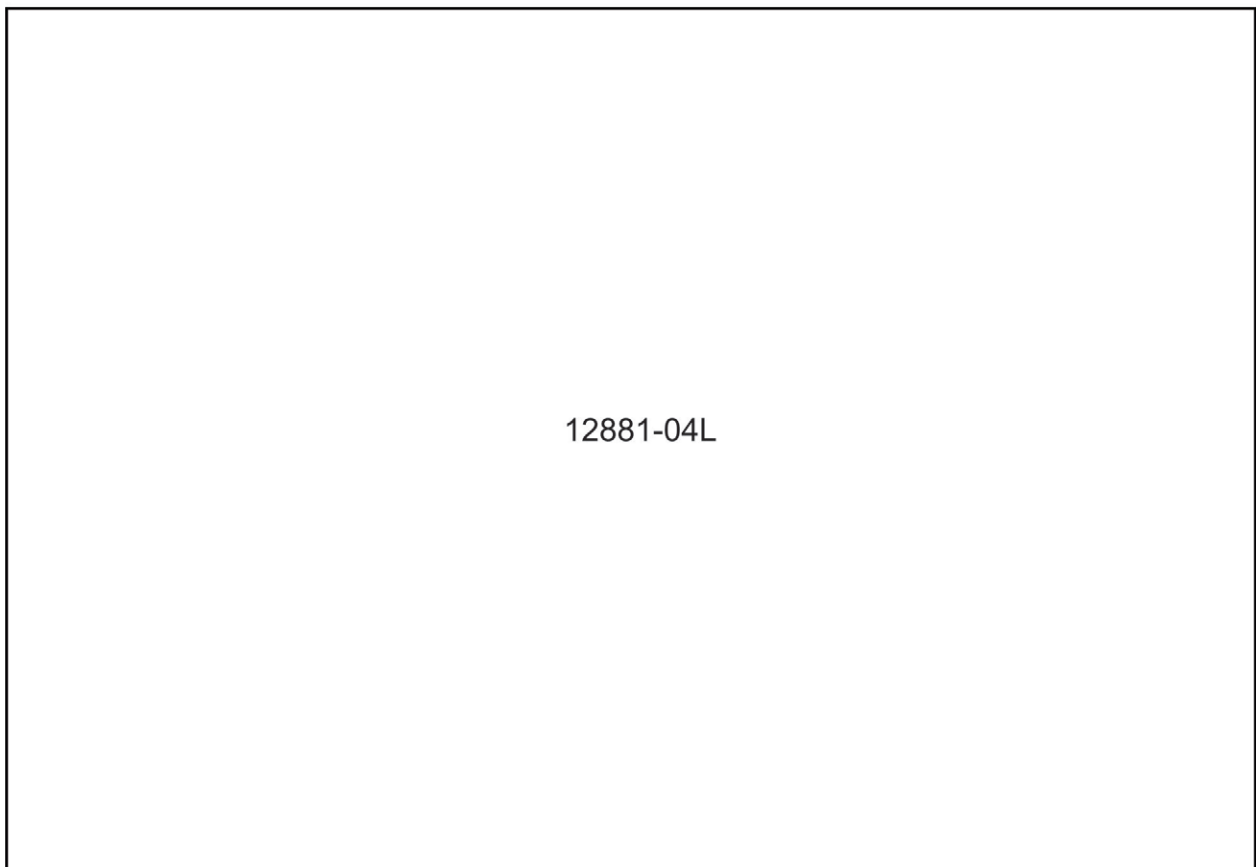
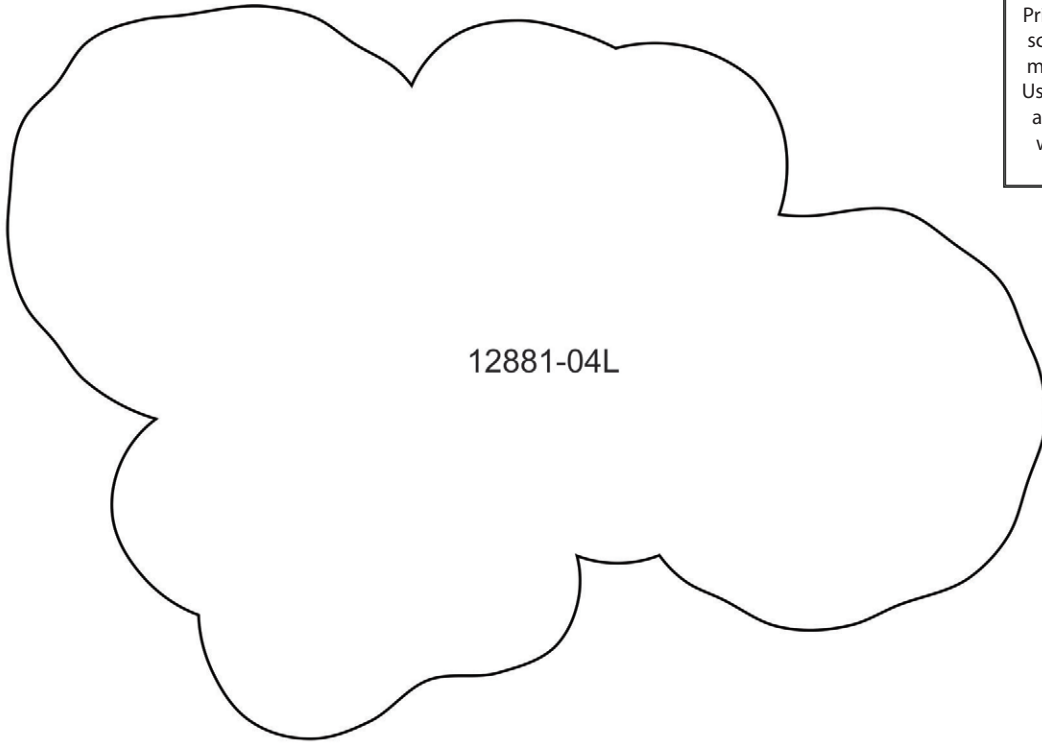


12881-03S

MIRRORED PATTERNS



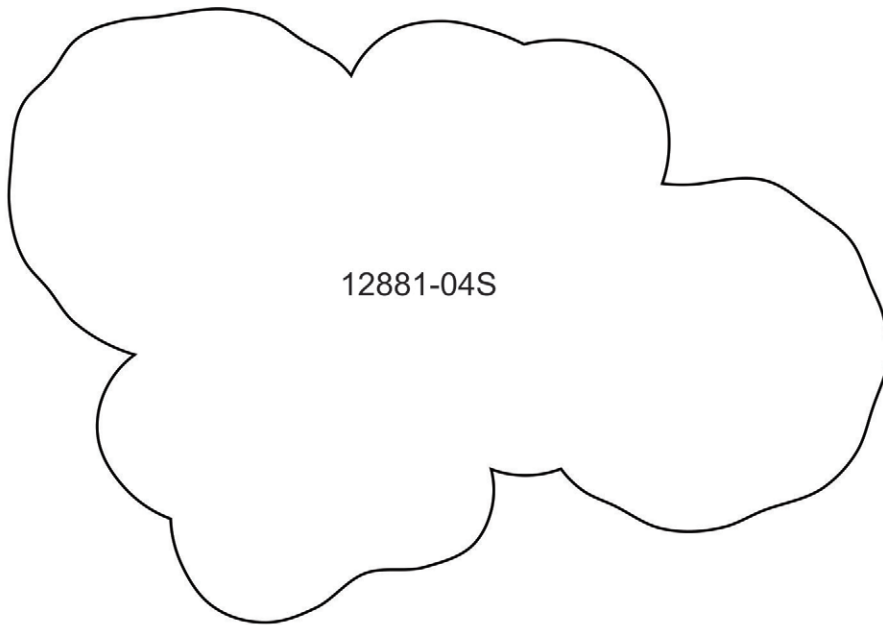
Print at 100%. No scaling. This box measures 1" x 1". Use the box as an accuracy guide when printing templates.



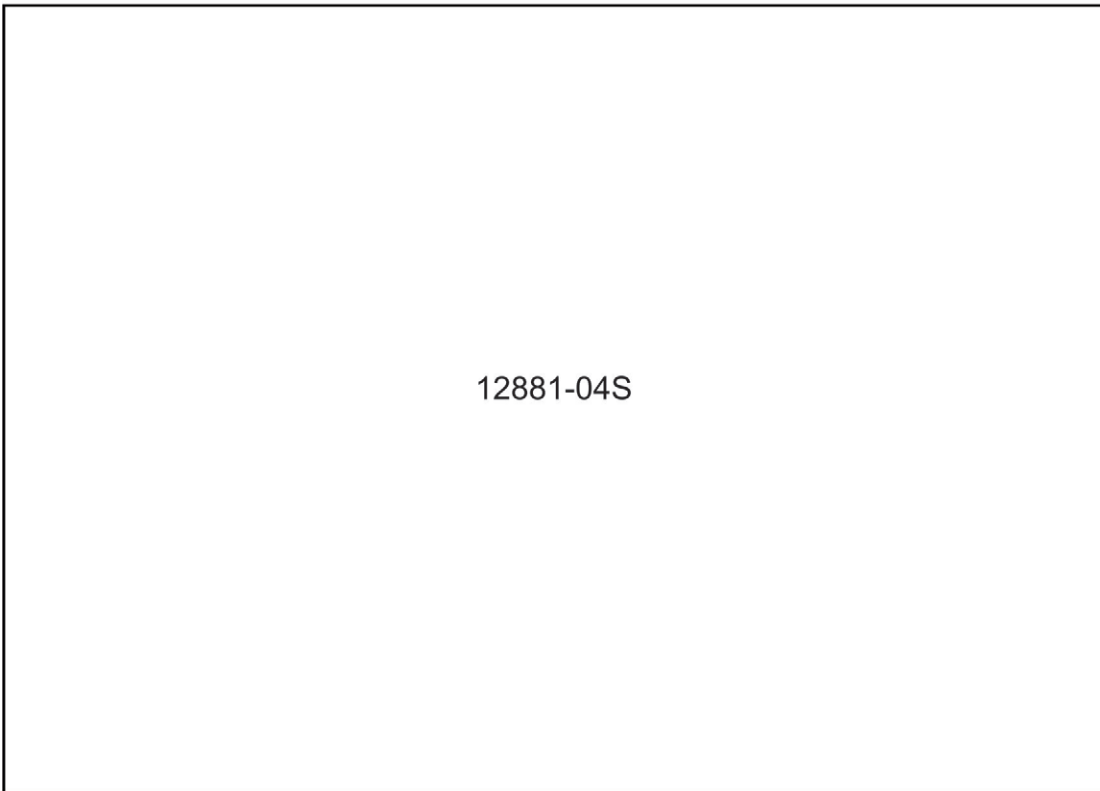
MIRRORED PATTERNS



Print at 100%. No scaling. This box measures 1" x 1". Use the box as an accuracy guide when printing templates.



12881-04S



12881-04S

MIRRORED PATTERNS



Print at 100%. No scaling. This box measures 1" x 1". Use the box as an accuracy guide when printing templates.

12881-05L

MIRRORED PATTERNS



Print at 100%. No scaling. This box measures 1" x 1". Use the box as an accuracy guide when printing templates.

12881-05L

MIRRORED PATTERNS



Print at 100%. No scaling. This box measures 1" x 1". Use the box as an accuracy guide when printing templates.

12881-06L

MIRRORED PATTERNS



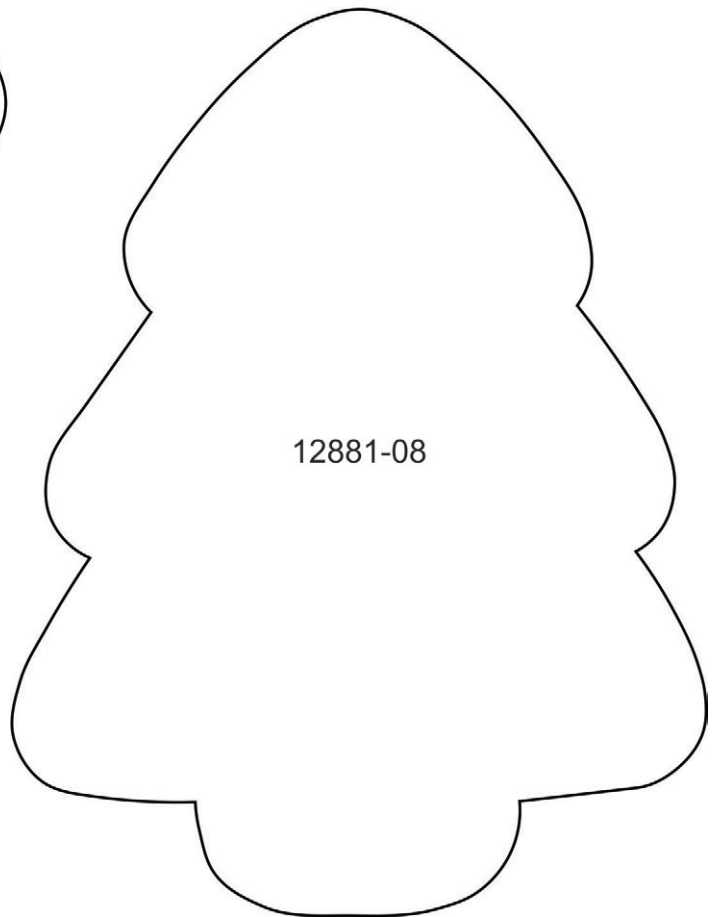
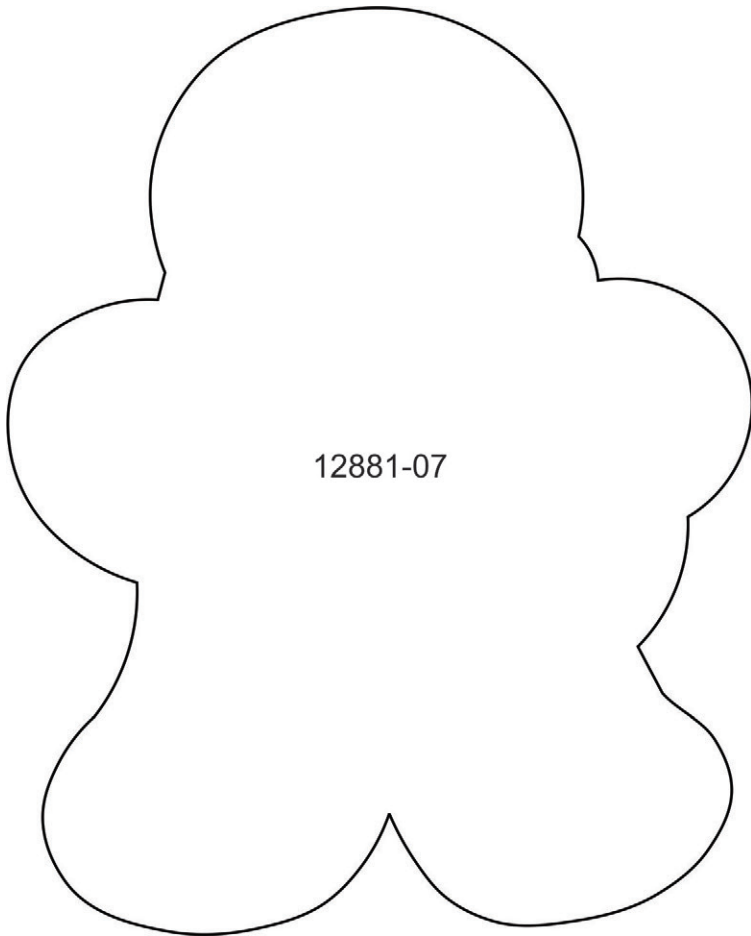
Print at 100%. No scaling. This box measures 1" x 1". Use the box as an accuracy guide when printing templates.

12881-06S

MIRRORED PATTERNS



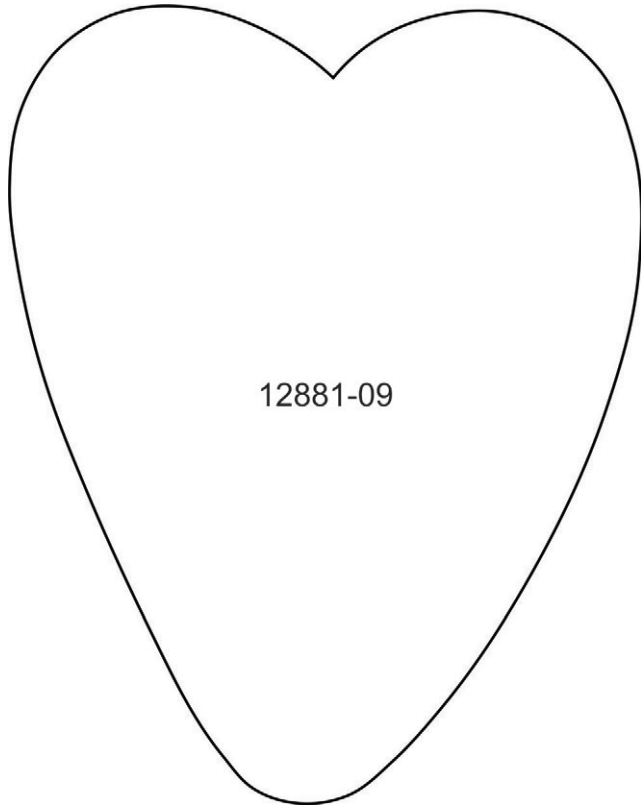
Print at 100%. No scaling. This box measures 1" x 1". Use the box as an accuracy guide when printing templates.



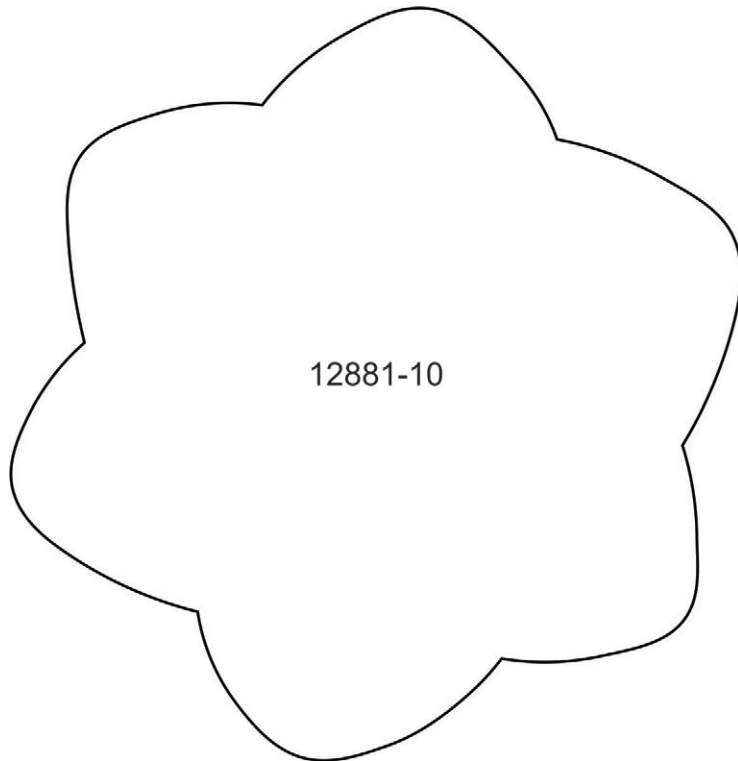
MIRRORED PATTERNS



Print at 100%. No scaling. This box measures 1" x 1". Use the box as an accuracy guide when printing templates.



12881-09

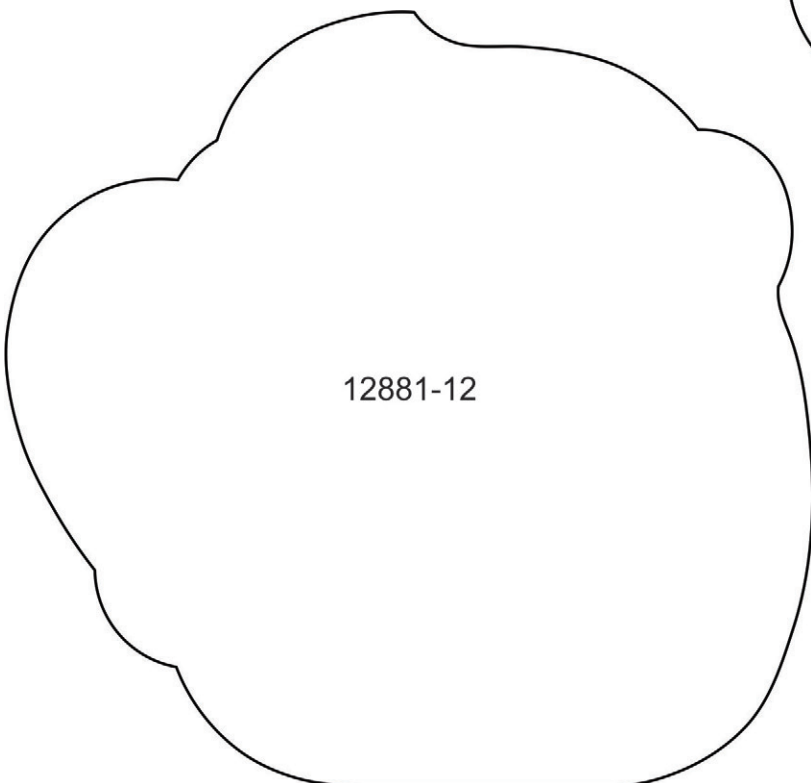
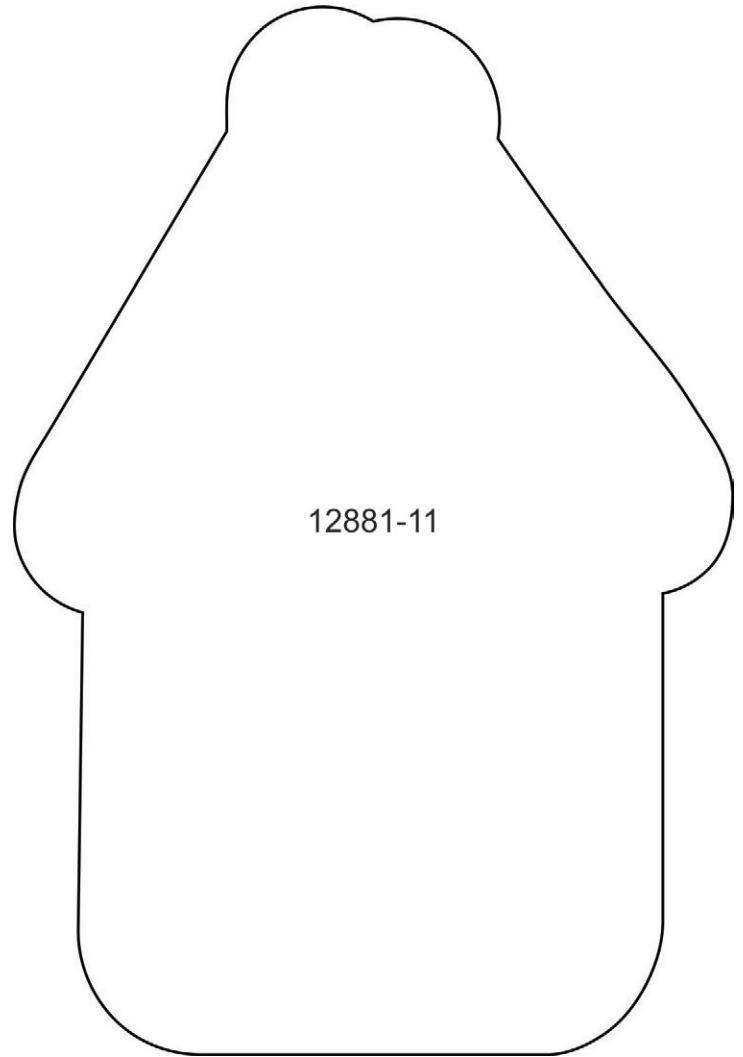


12881-10

MIRRORED PATTERNS



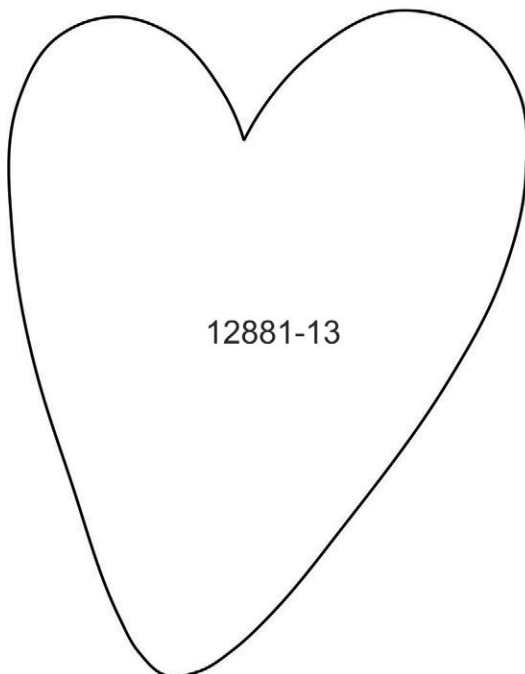
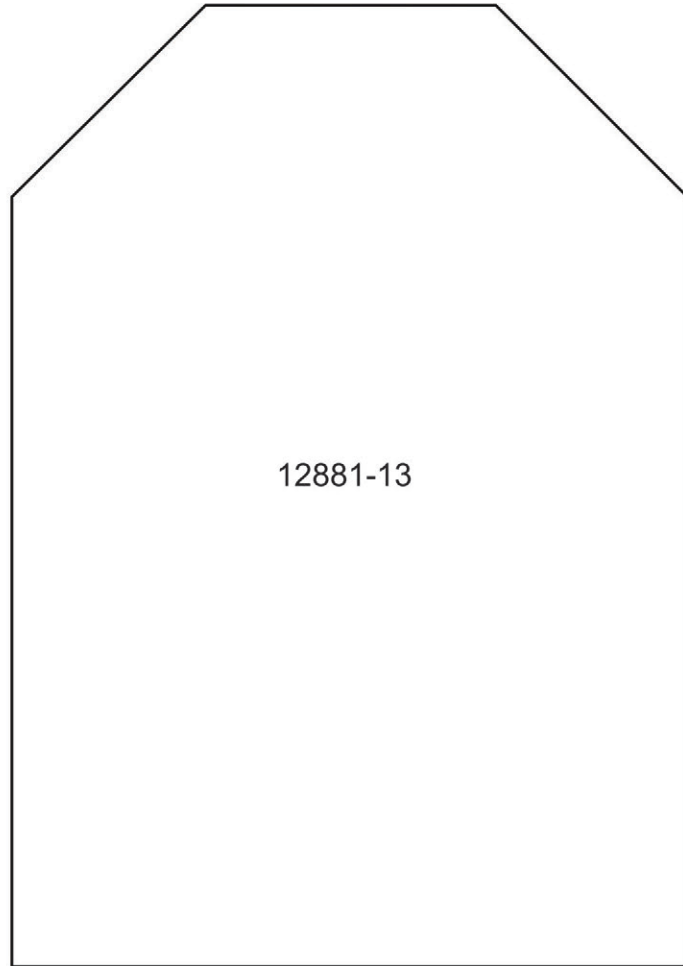
Print at 100%. No scaling. This box measures 1" x 1". Use the box as an accuracy guide when printing templates.



MIRRORED PATTERNS



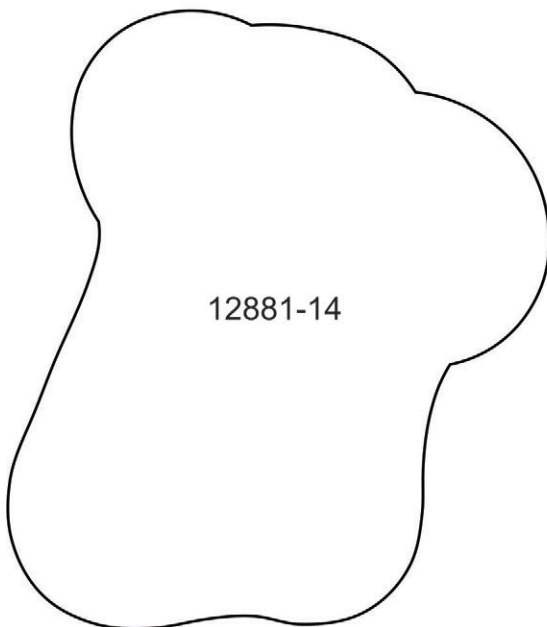
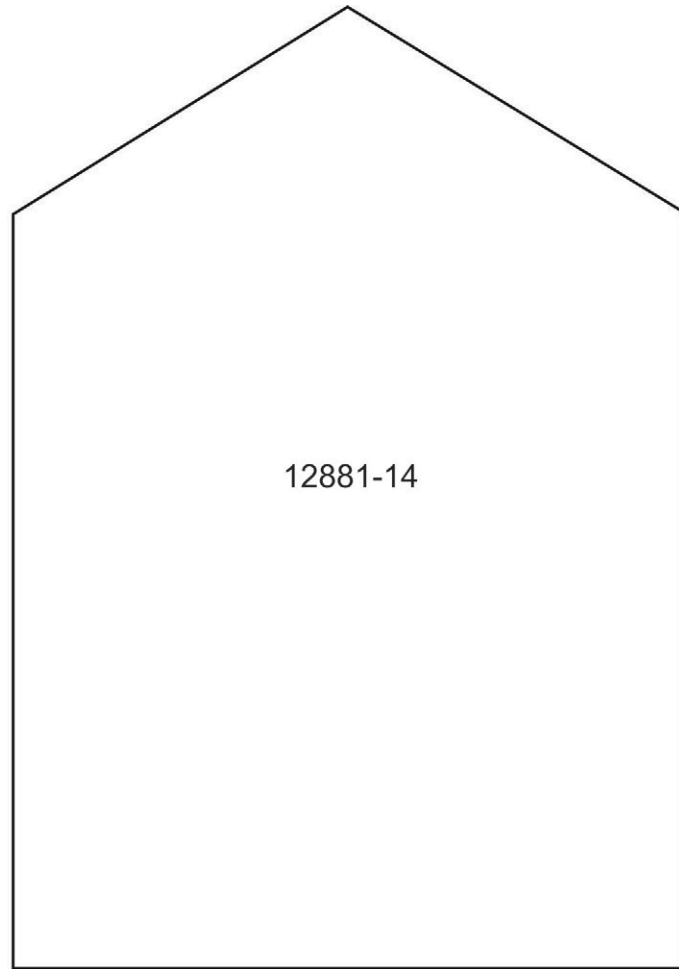
Print at 100%. No scaling. This box measures 1" x 1". Use the box as an accuracy guide when printing templates.



MIRRORED PATTERNS



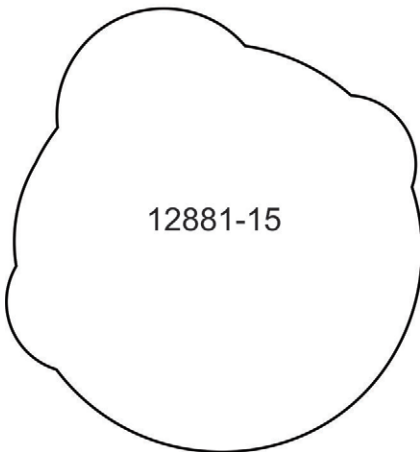
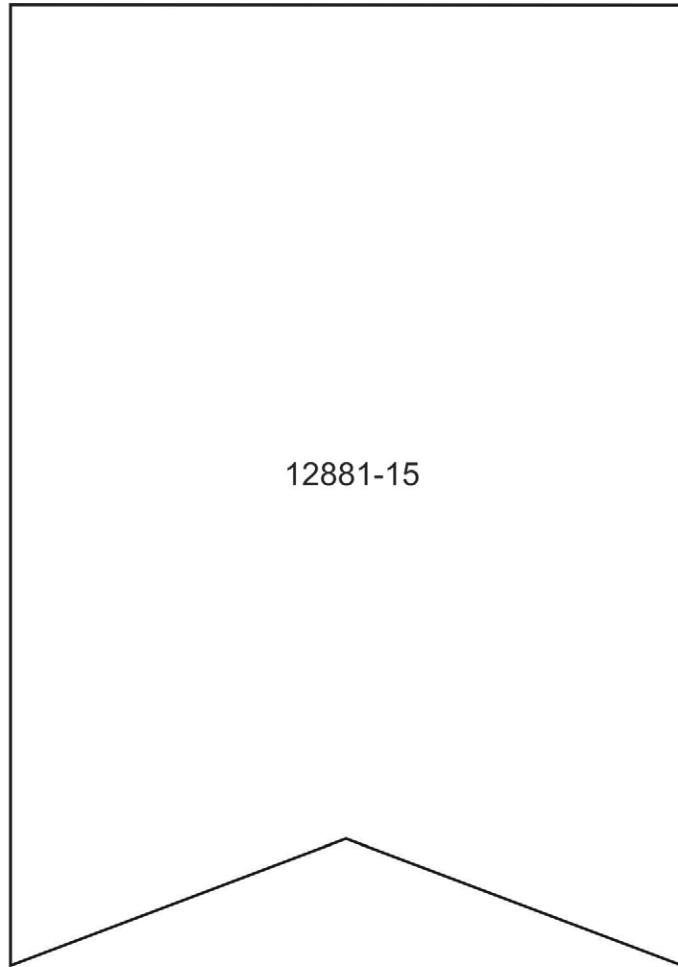
Print at 100%. No scaling. This box measures 1" x 1". Use the box as an accuracy guide when printing templates.



MIRRORED PATTERNS



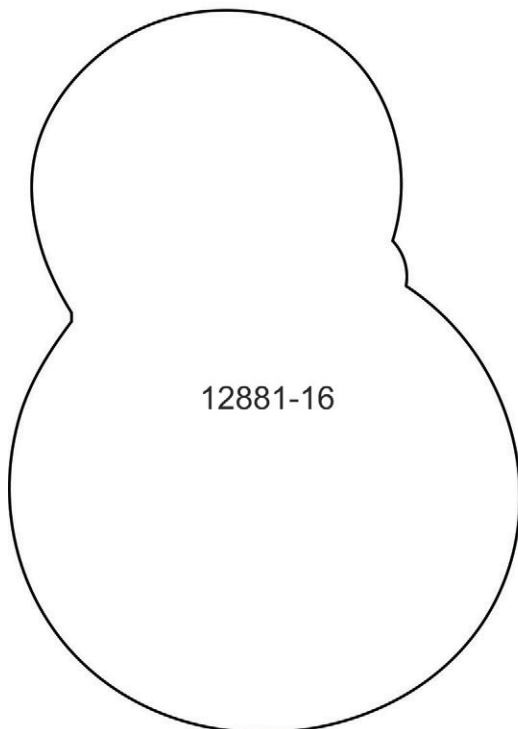
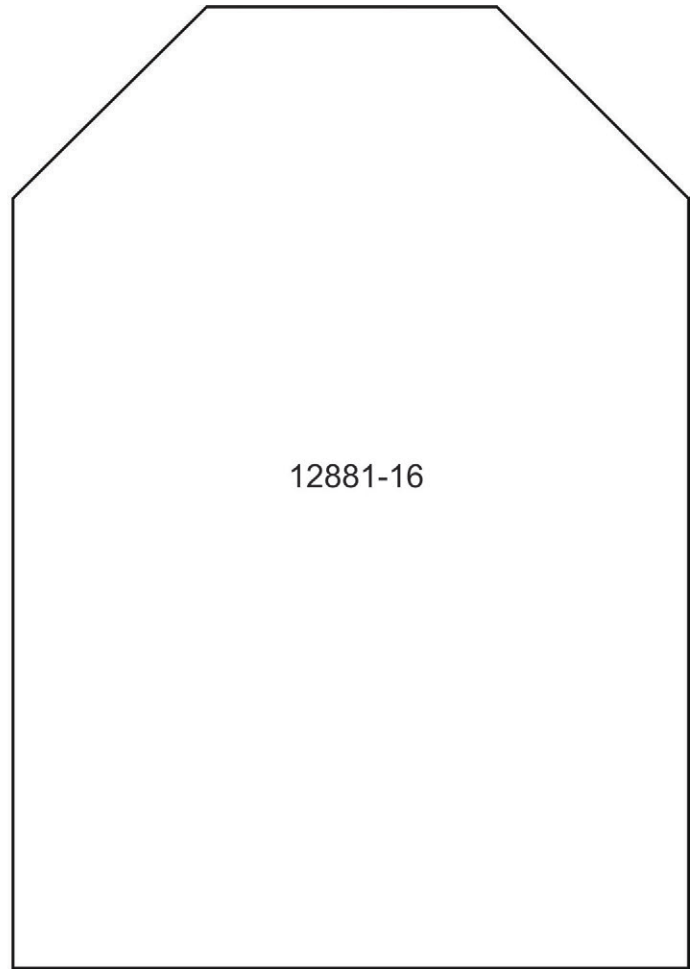
Print at 100%. No scaling. This box measures 1" x 1". Use the box as an accuracy guide when printing templates.



MIRRORED PATTERNS



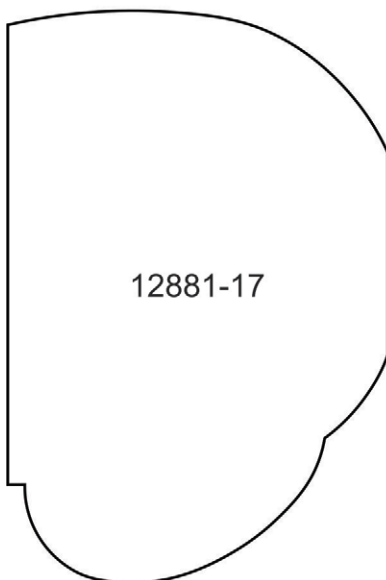
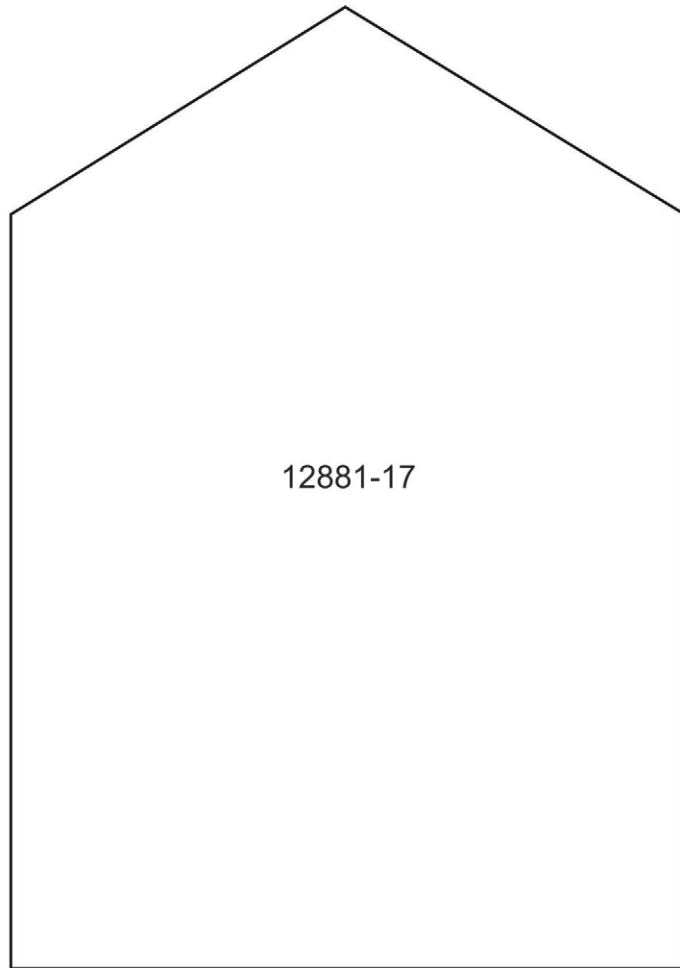
Print at 100%. No scaling. This box measures 1" x 1". Use the box as an accuracy guide when printing templates.



MIRRORED PATTERNS



Print at 100%. No scaling. This box measures 1" x 1". Use the box as an accuracy guide when printing templates.



MIRRORED PATTERNS



Print at 100%. No scaling. This box measures 1" x 1". Use the box as an accuracy guide when printing templates.

